

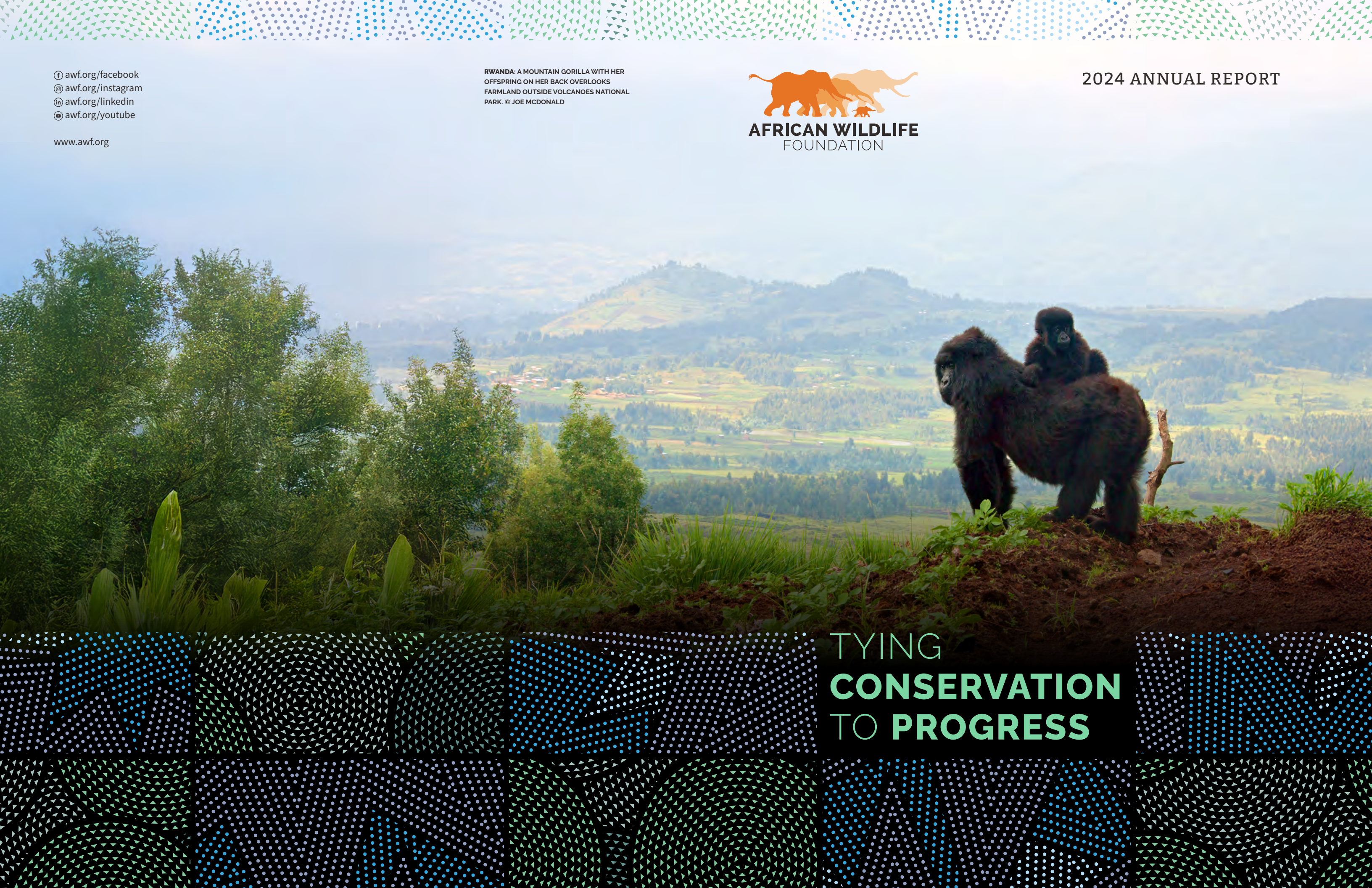
🌐 [awf.org/facebook](https://awf.org/facebook)  
📷 [awf.org/instagram](https://awf.org/instagram)  
🌐 [awf.org/linkedin](https://awf.org/linkedin)  
📺 [awf.org/youtube](https://awf.org/youtube)

[www.awf.org](https://www.awf.org)

RWANDA: A MOUNTAIN GORILLA WITH HER  
OFFSPRING ON HER BACK OVERLOOKS  
FARMLAND OUTSIDE VOLCANOES NATIONAL  
PARK. © JOE MCDONALD



2024 ANNUAL REPORT



TYING  
**CONSERVATION  
TO PROGRESS**



**OUR VISION**

An Africa where sustainable development includes thriving wildlife and wild lands as a cultural and economic asset for Africa’s future generations.

Table of Contents

LETTER FROM THE CEO: TYING CONSERVATION TO PROGRESS	6
WHAT MAKES US UNIQUE	7
OUR INTEGRATED STRATEGIES	9
IT STARTS WITH A PLAN	11
WILDLIFE IN 2024	13
SCALING ACTION	19
<i>Amplifying Voices for Wildlife: The Power of Networks &amp; Partnerships</i>	21
<i>Defining Nature as a Driver of Economic Growth: Building Biodiversity Economies</i>	25
<i>Creating Pathways for Leadership: A Case Study for Law Enforcement</i>	29
<i>Investing in African Changemakers: The Power of the Multiplier Effect</i>	33
<i>Implementing a Rights-Based Approach to Conservation: A Man with a Mission... and a Motorbike</i>	37
WHAT LEADERSHIP LOOKS LIKE	41
ADDRESSING CLIMATE CHANGE	49
INDEX OF OUR WORK	53
LETTER FROM THE CHAIR	65
THE VALUE OF AN UNRESTRICTED GIFT	67
PARTNERS	69
FINANCIALS	83



“

AWF's work is not just about conserving nature—it is about transforming lives and futures.

KADDU SEBUNYA

AWF Chief Executive Officer



TANZANIA: KADDU SEBUNYA (LEFT) VISITS MANYARA RANCH, A WORKING CATTLE RANCH AND CONSERVATION AREA ESTABLISHED BY AWF IN PARTNERSHIP WITH LOCAL COMMUNITIES. © AWF/ARIEL GAKUNGA



## LETTER FROM THE CEO

# Tying Conservation to Progress

When it comes down to a competition for Africa's natural resources between people and wildlife, people will win. Dams, roads, and railways will be built. Cities will expand. Extractive industries will continue to mine and drill. The challenge for Africa is recognizing our responsibility to steward our rich natural heritage even as we embrace growth.

When people aren't at the center of conservation solutions, protecting wildlife and their habitats becomes irrelevant, or worse, a source of conflict. Conservation competes with growth. People become alienated from the values of coexistence with nature. This is deeply ironic given that Africa's cultures and traditions—our very identities—are grounded in our relationship with the natural world.

How do we reconcile this? By partnering with leaders and communities across Africa to define a new vision of conservation. One that ties conservation to progress for people.

AWF's work is not just about conserving nature—it is about transforming lives and futures. We help governments, businesses, and communities balance the needs of people and the needs of wildlife. You will see examples of what that looks like in the "Scaling Action" sections of this report. There, we share stories of how we are working to link conservation to people's aspirations and collective dreams of a better future.

That can be as complex as designing a regional green growth strategy for the Rwandan government or as hands-on as helping a local entrepreneur in Zimbabwe develop an effective marketing plan for his broom-making business. The situations are diverse, but they share a common denominator. In everything we do, we emphasize

creating opportunity for people as part of building a future for Africa where people and wildlife thrive.

In my job, I have the privilege of representing AWF across the world. As I have traveled across the continent this year, two things have become very clear.

The first is that when conservation is tied to sustainable development, Africans understand its value. We understand the need to prioritize coexistence, not competition, with wildlife.

The second is that African leadership—at all levels—plays a critical role in shaping what coexistence looks like. This is because ultimately, it is Africa's laws and policies, our local councils and national governments, our businesses and investors, and our voters and consumers who must choose how we live with wildlife. This is what we seek to influence and shape.

I am extraordinarily proud of what AWF was able to achieve this year and grateful to all of you who are on the journey with us. I invite you to take a few minutes to explore this report and learn more about how we are realizing our vision of an Africa where sustainable development includes thriving wildlife and wild lands as a cultural and economic asset for Africa's—and the world's—future generations.

Asante sana,

Kaddu Sebunya  
AWF Chief Executive Officer



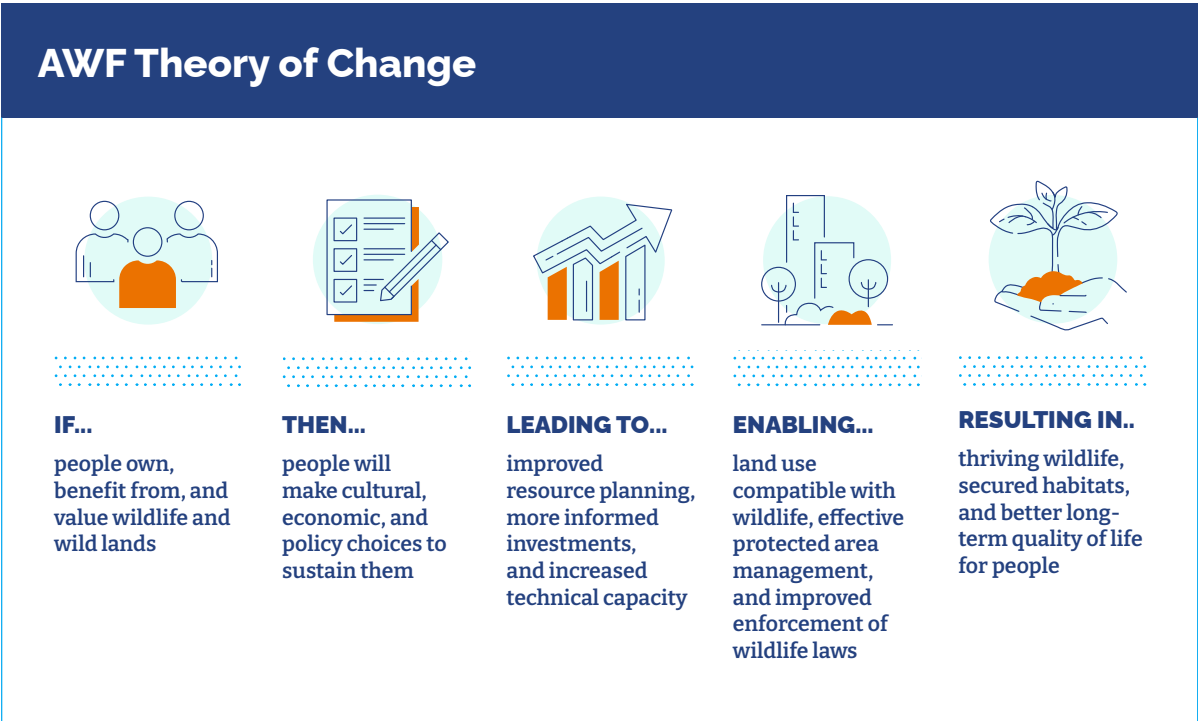


# What Makes Us Unique

AWF drives transformative change in Africa through strategies that link conservation to sustainable economic development.

We emphasize African leadership—and responsibility—in making choices that protect our natural heritage. And we recognize the importance of partnership with a global community that shares our goal of building a future where people and wildlife thrive.

Our approach is grounded in the belief that when people value nature, it becomes part of how they assess opportunity and how they envision growth. We engage people across society to understand the contributions nature and wildlife make to Africans’ lives and the importance Africa’s ecosystems hold for Africa and the world.



**RWANDA:** NYIRAMAHORO MARIE CHANTAL, A RESIDENT OF GAHURA VILLAGE IN KINIGI, RWANDA, PARTICIPATES IN A TRAINING ON HYGIENE AND SANITATION. THE TRAINING IS PART OF A SOCIAL ASSISTANCE PROJECT TO HELP RESIDENTS RELOCATE TO MODERN HOUSING WITH UPGRADED LIVING CONDITIONS, INCLUDING INDOOR PLUMBING. STRATEGIC LAND USE PLANNING IS MAKING ROOM FOR IMPROVED HOUSING FOR LOCAL COMMUNITIES LIVING NEAR VOLCANOES NATIONAL PARK WHILE INCREASING HABITAT FOR GORILLAS. © SPRUIK AGENCY



Our Integrated Strategies

AWF's standing as Africa's conservation NGO provides us unique trust and access in equipping African governments, institutions, businesses, and communities with the insights, tools, and support needed to balance the needs of wildlife and people across entire landscapes. To get there, we link conservation to development through three mutually reinforcing strategies.

**LEADING** for Wildlife

We empower people across all sectors of society and at all levels of leadership—continental, national, regional, and local—to create and be part of growth that recognizes the value of nature and nature's ecosystem services.

**LIVING** with Wildlife

We help people living in rural communities safely coexist with wildlife, receive and manage revenue from conservation activities, prosper from nature-friendly business development and entrepreneurial enterprises, and increase agricultural yields through climate-smart and sustainable farming techniques.

**CARING** for Wildlife

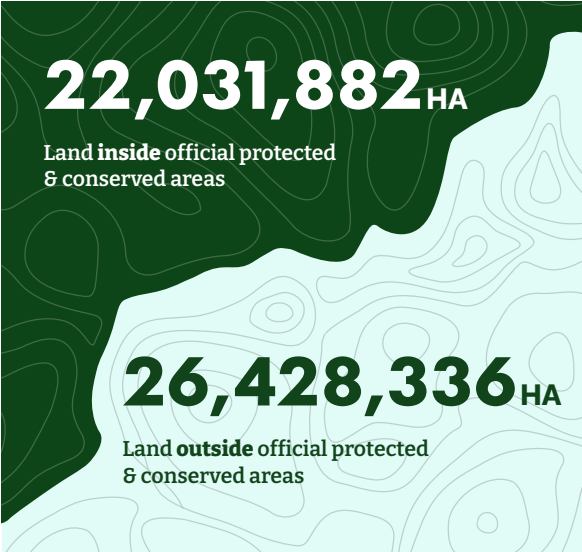
We shape and influence government policies for the protection of key species, strengthen wildlife management, and combat illegal wildlife trafficking through the detection, deterrence, investigation, and prosecution of wildlife crime.

“As a partner, AWF plays a pivotal role in enhancing our ability to engage with stakeholders, promote sustainable management of biological resources, and develop positions that recognize the essential contributions nature plays in the development of our continent.

HARSEN NYAMBE NYAMBE  
Director for Blue Economy and Sustainable Environment, African Union Commission

In the 14 landscapes where AWF has field programs, less than half the land was under protected and conserved status in 2024.

Working inside parks and other conservation areas is important, but it is not enough. Wildlife and people depend on healthy ecosystems that cross human boundaries. For this reason, our work focuses as much on what happens outside official protected and conserved areas as what happens within.



2024 RESULTS: At a Glance					
<div>94%</div> <div>AWF-monitored species populations stable or increasing</div>		<div>≈6,000</div> <div>Government rangers and community wildlife scouts trained or directly supported</div>		<div>42</div> <div>African countries represented in leadership networks</div>	
<div>10</div> <div>National wildlife authorities supported to detect &amp; deter illegal wildlife crime</div>	<div>1,000+</div> <div>Nature-based microenterprises supported</div> <div>(Cameroon, DRC, Ethiopia, Kenya, Tanzania, Zimbabwe)</div>		<div>68%</div> <div>DECREASE</div> <div>Human-wildlife conflict</div> <div>(measured in 14 landscapes)</div>	<div>14</div> <div>Landscapes with AWF programs supporting nature-based livelihoods</div>	
	<div>1,142,181<sub>HA</sub></div> <div>Under improved conservation status</div> <div>(measured in 14 landscapes)</div>			<div>100M+</div> <div>People reached through conservation media</div> <div>(as measured by combined media audiences)</div>	
<div>260K+</div> <div>Africans directly impacted by AWF conservation programs</div> <div>(including livelihood support, leadership development initiatives, and other training or investment)</div>			<div>2.5M</div> <div>Africans indirectly benefitting from AWF conservation action</div> <div>(through education, community awareness activities, events, and household affiliations to direct beneficiaries)</div>		



# It Starts with a Plan

Our work is grounded in a collaborative and inclusive process designed to empower communities and other stakeholders to make informed choices on land use and nature-based economic growth. Through this process, we develop comprehensive conservation and development plans to guide decision-making.

These plans map wildlife corridors and buffer zones between protected areas and private or community land, as well as areas best suited for infrastructure, livelihood development, and agriculture. This helps everyone—local communities, government planners, businesses, and wildlife authorities—make long-term decisions that allow people to prosper while conserving the ecological integrity of the landscape.

“We place our trust in AWF to offer a profound and nuanced perspective on harmonizing conservation with development. They have demonstrated themselves to be the quintessential partner in designing and executing a comprehensive vision for sustainable green growth in the vicinity of Volcanoes National Park.

EUGENE MUTANGANA  
Interim Managing Director, Conservation  
Company, Rwanda Development Board

RWANDA: PLANS TO CREATE A LAND BUFFER BETWEEN RESTORED MOUNTAIN GORILLA HABITAT AND FARMLAND ARE PROJECTED TO REDUCE HUMAN-WILDLIFE CONFLICT BY UP TO 80%. © SPRUIK AGENCY

## Applying Our Approach: Rwanda

The recovery of the mountain gorilla population in Rwanda’s Volcanoes National Park over the past three decades is one of the world’s great conservation success stories, but it’s creating new challenges for Rwanda. The mountain gorilla population is outgrowing the park, leading to increased human-wildlife conflict and fighting between gorilla troops.



In response, the Rwandan government turned to AWF to develop a comprehensive master plan for the region that increases critical habitat for gorillas while driving green growth, better living conditions for people, and resilience to climate change for communities around the park.

AWF is currently implementing a multi-year pilot project designed as a proof of concept for the master plan. The pilot includes increasing gorilla habitat for the park, creating opportunities for nature-based economic development, and ensuring that international human rights standards are at the center of all community engagements.

“With the Volcanoes Community Resilience Project, I see hope for the future—not just in expanding my shop, but in building a better life for my family. This is not just about business; it’s about dignity, opportunity, and progress for our community.”  
MUKARWEGO AGNES  
Farmer and single mother of two, Nyakigina village

## Making the Plan Reality

Government of Rwanda requested AWF to lead on creating a resilient, green growth strategy for the region around Volcanoes National Park → AWF is developing a master plan mapping overall economic, social, and environmental development for the landscape

### RESULTS TO DATE

Opportunities for People:

510

households sensitized to their rights regarding the project

100+

local entrepreneurs supported

Security for Wildlife:

27<sub>HA</sub>

restored for gorilla habitat (land donated by AWF)

### PROJECTED OUTCOMES

17K

people with new skills & jobs

3,740<sub>HA</sub>

restored for habitat for wildlife

3.4K

people living in modern green villages

US \$294M

to the Rwandan economy



# WILDLIFE IN 2024

“

Resilient ecosystems are what we need to focus on for the long-term well-being of both people and wildlife. Landscape conservation encompasses multiple interacting ecosystems and a variety of land uses to ensure resiliency. It emphasizes coexistence and sustainability as the ways people and wildlife can share space and thrive.

PHILIP MURUTHI

AWF Vice President, Species Conservation and Science



KENYA: TWO GIRAFFES CROSS A ROAD CUTTING THROUGH TSAVO EAST NATIONAL PARK.





KENYA: HUMAN-WILDLIFE CONFLICT IS ONE OF THE MOST PRESSING CONSERVATION CHALLENGES IN AFRICA, IN PART DUE TO THE EXPANSION OF FARMLAND AND HUMAN SETTLEMENTS NEAR PROTECTED AREAS AND GAME RESERVES. THE KILLING OF LIVESTOCK BY PREDATORS SUCH AS LIONS PLACES A BURDEN ON ALREADY IMPOVERISHED RURAL HOUSEHOLDS AND CAN LEAD TO RETALIATORY KILLINGS. © BILLY DODSON

Wildlife doesn’t recognize human boundaries, and neither does nature. Parks and other protected areas play important roles as anchors of conservation. But by themselves they can only conserve some habitats, not full ecosystems, which extend past protected area borders.

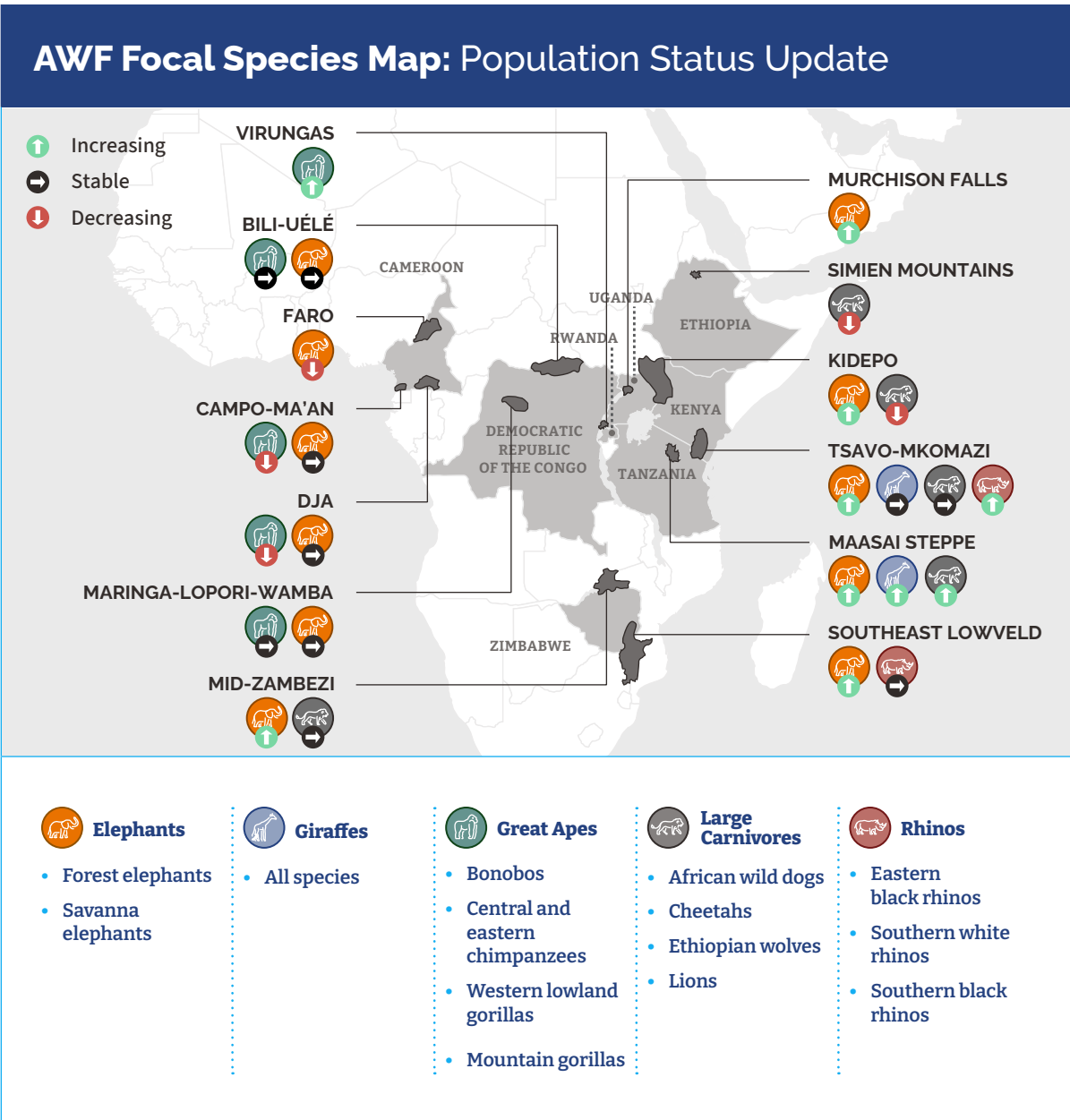
We call the mosaic of lands—public, private, and community-owned—that together make up larger ecosystems “conservation landscapes.” Wildlife corridors and dispersal areas across these landscapes link protected areas and are vital to conserving species like elephants, lions, and rhinos.

Currently, we are monitoring 45 populations of priority wildlife species across 13 landscapes, analyzing field and other data to determine threats facing each population. Populations were chosen because their viability provides good indications of overall ecosystem health and wildlife security.

Continued on page 17>

Where AWF has human-wildlife conflict mitigation projects, human-wildlife conflict has decreased by **68%**.

AWF has identified 42 biologically and ecologically important landscapes across sub-Saharan Africa. We are monitoring 45 wildlife populations in 13 of them.







We play a key role in shaping wildlife policies by helping governments develop national species action plans and recovery strategies. This year, we assisted the Kenya Wildlife Service with a five-year Species Recovery and Action Plan for Giraffes and supported the Ethiopian Wildlife Conservation Authority in developing a plan for the vulnerable Walia ibex. AWF staff participate in Kenya's National Rhino Management Committee and are leading the protection enforcement group for Zimbabwe's National Elephant Strategy, offering expertise to improve wildlife management.

On the ground, we are tackling one of the greatest threats to wildlife and people in Africa—human-wildlife conflict. Conflict is being exacerbated by climate change, competition for scarce resources like fresh water, and people's expansion into traditional wildlife areas. To address this, we focus on helping communities successfully coexist with wildlife.

Sometimes the solutions seem simple, but for farmers trying to protect crops, women trying to avoid deadly interactions when getting water, or herders worried about attacks on livestock, these solutions are lifesavers.

Recent examples include work in Kenya, supported by the Swedish International Development Cooperation Agency. There, beehive fences are used to deter elephants from raiding crops, and separate water sources for wildlife and people (and their livestock) reduce the potential for dangerous interactions. In Mbire, Zimbabwe, we are improving enclosures for livestock to prevent predator attacks and providing the community with information on safe ways of coexisting with predators.

## FELLOW SPOTLIGHT



### DOUGLAS NJERI KAMARU

*University of Wyoming, 2024 Charlotte Fellow*

*Research: Lion populations in Kenya's Tsavo Conservation Area*

Lions are a keystone species whose well-being indicates the relative health of an ecosystem. But lion population density in the Tsavo Conservation Area, one of four remaining lion strongholds in East Africa, is only a quarter of what researchers think it could be. Charlotte Fellow Douglas Kamaru wants to know why. His research examines the impacts of prey loss, human-wildlife conflict, climate change, and land degradation on predators. Data received from lions collared in the Tsavo Conservation Area with support from Simply Southern is giving him insight into lion movements and will inform conservation strategies such as land use planning, wildlife management, and human-wildlife conflict mitigation efforts.



# SCALING ACTION

“

If you want to go fast,  
go alone. If you want  
to go far, go together.

AFRICAN PROVERB

**Amplifying Voices for Wildlife:** 21  
The Power of Networks & Partnerships

**Defining Nature as a Driver of Economic Growth:** 25  
Building Biodiversity Economies

**Creating Pathways for Leadership:** 29  
A Case Study for Law Enforcement

**Investing in African Changemakers:** 33  
The Power of the Multiplier Effect

**Implementing a Rights-Based Approach to Conservation:** 37  
A Man with a Mission... and a Motorbike

TANZANIA: CLIMATE-SMART TERRACE FARMING IN KILOMBERO VALLEY. KILOMBERO IS PART OF AN AGRICULTURAL CORRIDOR THAT PRODUCES MORE THAN HALF OF ALL FOOD GROWN IN TANZANIA. © JACKLINE KYARUZI



# Amplifying Voices for Wildlife

## THE POWER OF NETWORKS & PARTNERSHIPS

**TANZANIA:** THE ANNUAL GREAT MIGRATION IS THE LARGEST OVERLAND MIGRATION IN THE WORLD, WITH WILDEBEEST, ZEBRAS, AND OTHER WILDLIFE TRAVELING 800 KILOMETERS OR MORE ACROSS KENYA AND TANZANIA. AWF'S LANDSCAPE APPROACH HELPS TO SECURE ESSENTIAL CORRIDORS BETWEEN PROTECTED AREAS TO ENSURE WILDLIFE CAN MIGRATE SAFELY.

We are catalyzers and conveners. We use this power to advise and mobilize decision-makers at all levels to make conservation a key part of Africa's growth strategies. This includes connecting and empowering networks of youth, civil society, protected area directors, and other African institutions to drive change.

As trusted partners, we ensure these voices are heard from local to national and continental levels, bringing conservation to the table with everyone from community stakeholders to heads of state across Africa and around the world.

Over the past two years, AWF has been instrumental in establishing and supporting networks of conservation power players, including the Africa Protected Area Directors, a group representing leadership of Africa's parks and other official protected and conserved areas. Another network is the African CSOs Biodiversity Alliance, which provides a platform for Indigenous and local community organizations to collectively advocate for policies integrating conservation and sustainable development. We helped to found both networks and provide strategic and operational support. This year marks a milestone for the Alliance, as it is now registered as an independent Kenya-based NGO.

An essential component of scaling impact is convening these power players and other decision-makers to drive progress towards meeting global biodiversity targets. For example, in March we brought together the Africa Protected Area Directors and other stakeholders to forge agreement on the importance of acknowledging integrated landscape management and community conservation areas in protected area conservation strategies. This agreement was an important recognition of the need for collaborative conservation solutions that include land and people outside of protected area boundaries.

*Continued on next page >*



Before APAD was established, we as protected area leaders didn't have a space for collective problem-solving. APAD is not only triggering collaboration and information exchange across countries to meet biodiversity and climate goals, but it is also helping us accelerate changes in the attitudes and behaviors of Africans regarding these issues.

**MOHAMED HARUN**

*Special Advisor, Administração Nacional das Áreas de Conservação Mozambique and APAD member*

## Networks & Partnerships



**African CSOs Biodiversity Alliance (ACBA):** Pan-African network of local civil society organizations advocating for conservation\*

### AGN

**African Group of Negotiators on Biodiversity:** United Nations-supported group of experts representing Africa in the global Biodiversity COP (AWF provides translation services & policy support to increase Africa's unified representation in global negotiations)



**Africa Protected Area Directors (APAD):** Advocacy and collaboration network open to leaders of Africa's 8,932 official protected & conserved areas\*



**African Union:** Continental body of 55 African nations, admitted as a member of the G20 in 2023 (AWF serves as the AU's primary conservation advisor in the implementation of Vision 2063, a blueprint for building a prosperous and united continent)

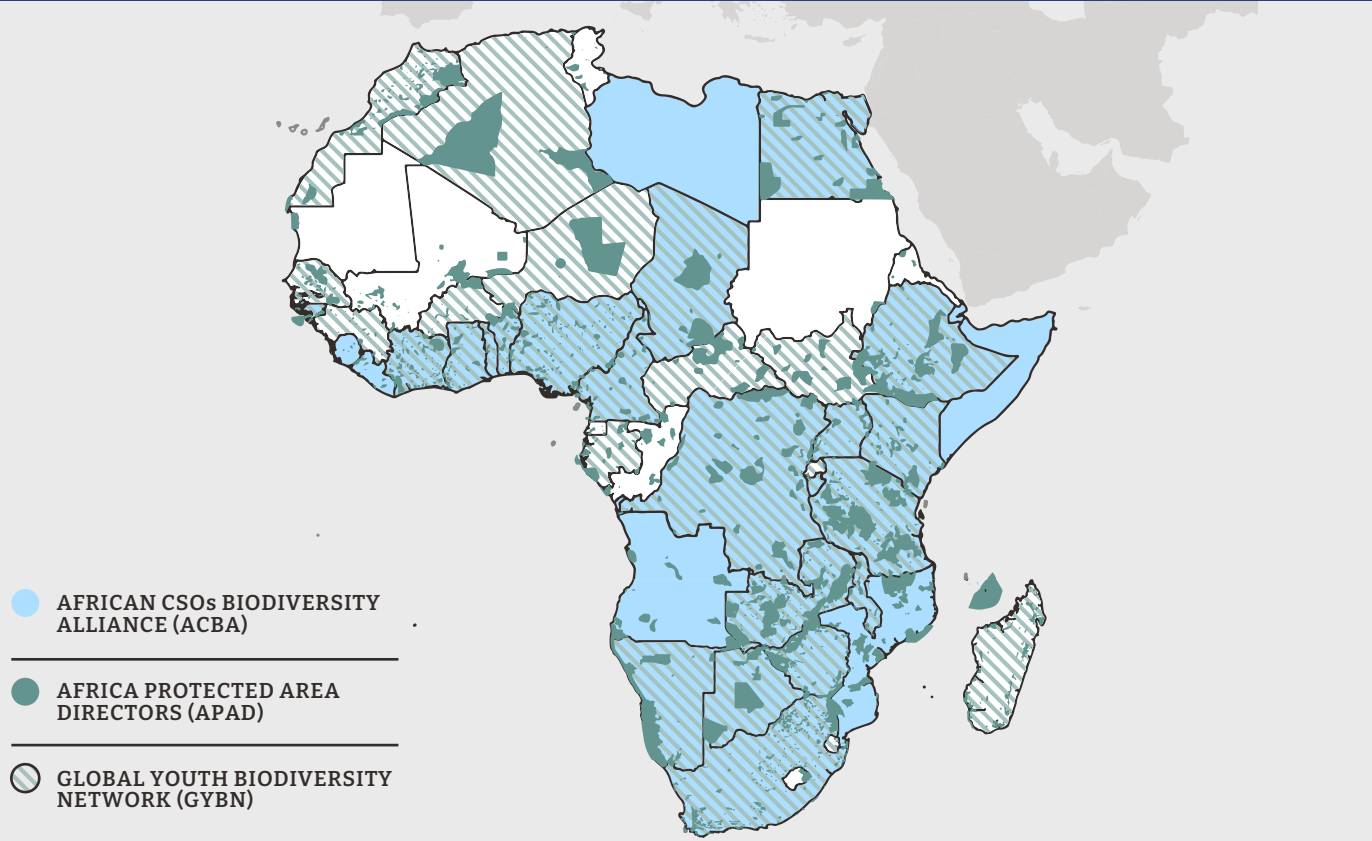


**Global Youth Biodiversity Network - Africa Chapter (GYBN):** Global coalition of youth conservationists building awareness and support to halt biodiversity loss

*\*AWF supports as secretariat*



The Reach of Networks



We also build and expand partnerships to bring diverse perspectives to decision-making tables. Achievements this year include:

- Creating formal collaborations for the Africa Protected Area Directors network with the High Ambition Coalition for Nature and People, WWF on climate change, the Campaign for Nature and Sustainable Finance Coalition on conservation finance, and the IUCN on Other Effective Area-Based Conservation Measures.
- Contributing to the African Union’s Africa Biodiversity Strategy and Action Plan, which addresses continental biodiversity loss and ecosystem degradation.
- Supporting the establishment of the African Indigenous Peoples and Local Communities Alliance, a vehicle for increasing representation of marginalized groups in policy decisions.

Outside Africa, as part of our work with the United States government, we brought African-led conservation approaches and perspectives to the design process for a new funding vehicle for conservation, the US Foundation for International Conservation. We are expanding our strategic partnership with the European Union for delivering NaturAfrica programming in landscapes across the continent. And, at the global level, we continue our support of inclusive and unified African representation at negotiations such as the Biodiversity COP and the Climate COP.



A Bird's Eye Perspective

In partnership with spatial data leader Esri, we are developing and providing innovative GIS tools for data-based decision-making.



**Degradation Dashboard:** Leverages deforestation alerts and near-time high-resolution satellite imagery to enable users to quickly identify ecosystem risks and plot solutions. We have deployed a pilot with five African CSOs Biodiversity Alliance partners who are testing various applications, from assessing urbanization-driven forest degradation in Kenya to mapping the impact of oil infrastructure development in the Niger Delta.



**TRACTS Sites:** Integrates near real-time data streams from field and remote sources to monitor protected areas. A collaboration with Africa Protected Area Directors members in Ethiopia, Cameroon, and Zimbabwe to test and scale adoption was launched in March.



# Defining Nature as a Driver of Economic Growth

BUILDING BIODIVERSITY ECONOMIES

ZIMBABWE: PHILMON MATIVENGA MAKES UP TO 2,000 BROOMS PER MONTH FROM ILALA PALMS, EARNING AROUND US\$800 WHEN DEMAND IS HIGH. © AWF

In Zimbabwe's Muzarabani District, located 290 kilometers northeast of the capital of Harare, AWF-supported enterprise programs have empowered women and young people like 29-year-old Philmon Mativenga.

In November 2023, Mativenga was one of 120 people who participated in a training to develop and improve small businesses based on non-timber forest products. He makes brooms utilizing native ilala palms, which he sells at Harare's biggest market, Mbare.

"The AWF training provided powerful insights on how I can make my business unique with a focus on marketing, record keeping, business principles, ethics, and business proposal writing," Mativenga reflected. "We are currently in the process of setting up a formalized group to advance our ventures using the knowledge from the training."

**Biodiversity economies use nature and wildlife—plants and animals—as assets to create economic value that aligns with conservation objectives and contributes to sustainable development.**

Mativenga is part of Zimbabwe's biodiversity economy. With our assistance, the country has completed a systematic analysis to demonstrate how nature is already part of the economy and how it can be the backbone of a powerful sector of economic growth. The country's biodiversity economy—valued at more than US\$2 billion as of 2022—includes ecotourism but extends to sustainable activities such as fisheries, forestry, and non-timber forest products, including Mativenga's ilala palm brooms.

*Continued on next page >*

## Nature's Role in Zimbabwe's Economy

**US \$2B**

Annual value of Zimbabwe's biodiversity economy

### Examples of Contributing Sectors

▶ **\$500M**  
Non-timber forest products

▶ **\$250M**  
Fisheries

▶ **\$50M**  
Forestry

▶ **\$30M**  
Sport hunting

*\*Zimbabwe Biodiversity Economy Report, 2022*





**ZIMBABWE:** ILALA PALM BROOM BEING SOLD IN HARARE'S MBARE MARKET. THE ILALA PALM HAS TWO MAJOR ADVANTAGES FOR SUSTAINABILITY. IT GROWS WELL IN A RANGE OF CONDITIONS—MAKING IT RESILIENT TO CLIMATE CHANGE—AND IT CAN BE HARVESTED FROM THE FOREST WITHOUT HARMING THE ECOSYSTEM. © AWF

An important part of defining biodiversity as part of an economic sector is linking nature-based products to sustainable value chains that generate investment and economic scale. Zimbabwe is already leveraging the analysis to guide carbon sequestration valuation in forestry planning. Our partnership with First Capital Bank Holdings, a diversified financial services group with operations in Zimbabwe and Botswana, provides the foundation for private sector investments required to implement the plan.

The World Bank's flagship Global Wildlife Program, funded by the Global Environment Facility, the largest funder of biodiversity conservation in the world, has recognized the Zimbabwe Biodiversity Economy Report as a best practice for other countries. Currently, we are working with Sierra Leone on a similar analysis. While a final report is still being drafted, government agencies and leaders, including Sierra Leone's recently elected Minister of the Environment and Climate, have taken notice. Other countries interested in working with us to define national biodiversity economies include Cameroon, Botswana, and Mozambique.

Our approach to building biodiversity economies isn't always national. A landscape-level example is our groundbreaking work with the government of Rwanda. That work is being guided by the

comprehensive master plan we are developing, which fully integrates conservation into green growth. It is so compelling that the World Bank is investing US\$60 million with the Rwandan government through the Volcanoes Community Resilience Project for Rwanda.

Along with ecotourism connected to mountain gorilla trekking and the restoration and expansion of Volcanoes National Park, the master plan includes strategies that will positively impact watershed management, food production, the service sector, and community resilience. For households in the landscape, it means a projected 35% increase in income.

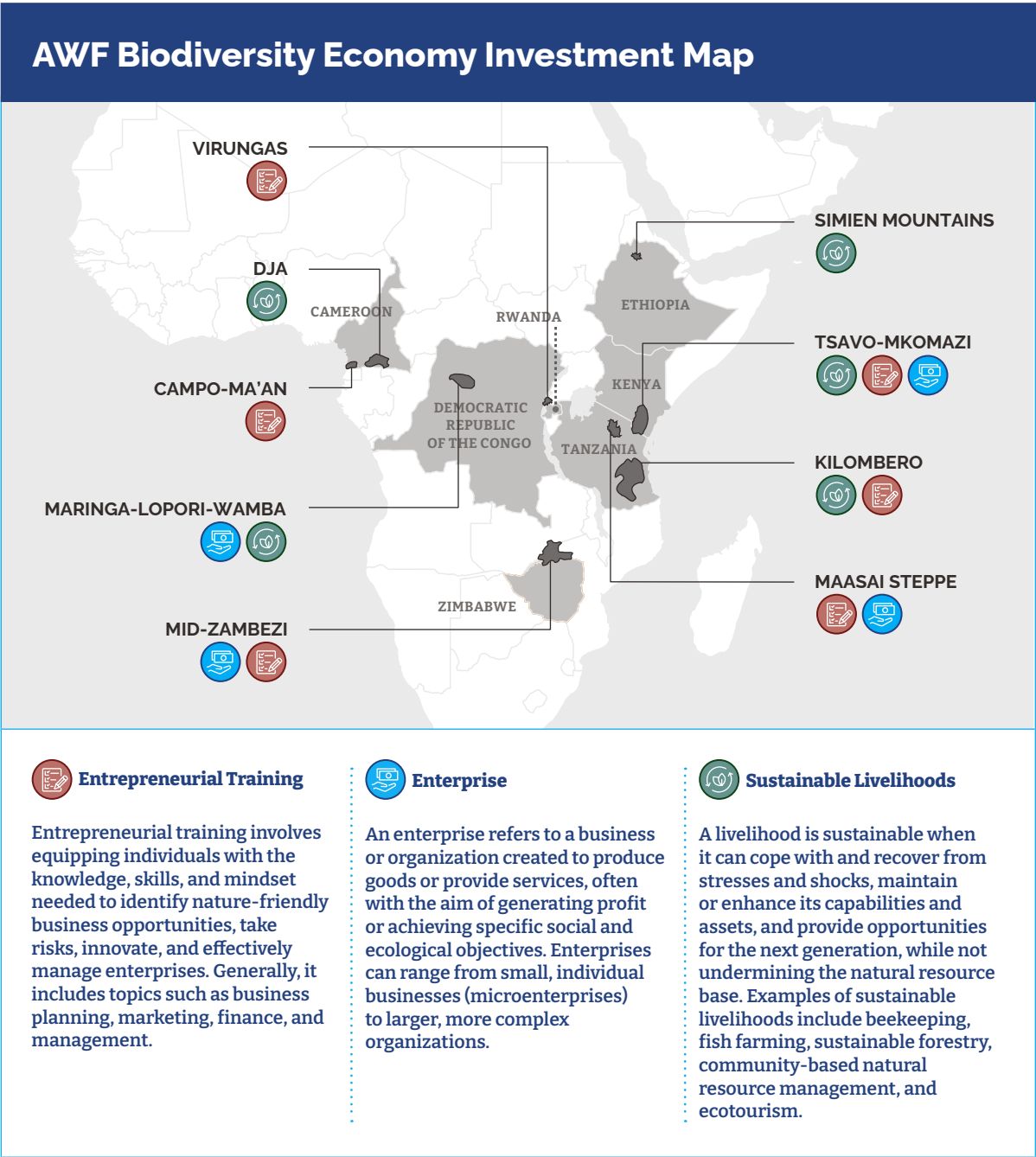
At the community level, this year we celebrated the transition of Tanzania's Manyara Ranch to full community management. The ranch, with AWF support, has found balance as both a working cattle ranch and a conservation area in the middle of an important wildlife corridor between two national parks. Day-to-day leadership by the local Manyara Ranch Management Trust began auspiciously in July 2024 with the announcement of an ecotourism investment of US\$8.2 million from Sea and Bush Limited.

“

AWF's biodiversity economy work is a systems-level approach linking nature to meaningful economic growth for governments, businesses, and ultimately individual people. This kind of thinking made me realize that conservation is relevant in my world.

**SHINGAI MUTASA**  
*Founder of Masawara & AWF Board Member*

We build biodiversity economies through sustainable livelihoods, local enterprise and value chain development, and entrepreneurial training, with an emphasis on women and youth.





# Creating Pathways for Leadership

## A CASE STUDY FOR LAW ENFORCEMENT

DRC: THE MATADI SEAPORT'S STRATEGIC LOCATION ALONG THE CONGO RIVER AND ACCESS TO INTERNATIONAL SHIPPING LANES MAKE IT A CRITICAL NODE IN A TRANSNATIONAL, MULTI-BILLION-DOLLAR WILDLIFE TRAFFICKING NETWORK. © GUENTER GUNI

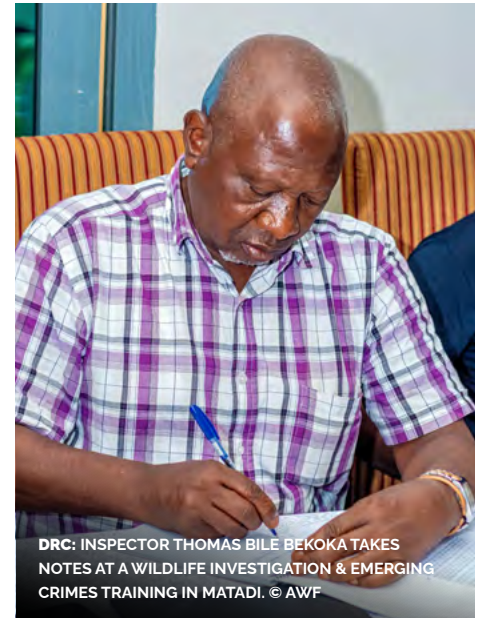
Africa's multi-billion-dollar illegal wildlife trafficking network uses transit hubs such as the Port of Matadi, the principal port of the Democratic Republic of the Congo (DRC), as strategic cogs in their complex operations. At the port, Inspector Thomas Bile Bekoka coordinates ship docking, documents goods carried by each ship, and inspects cargo as it is loaded. He was largely unaware of the growing impact of wildlife trafficking moving through the port—or his country's laws to combat the illegal wildlife trade.

That changed when Bekoka attended the Wildlife Investigation & Emerging Crimes program, an AWF training program funded by the US State Department's Bureau of International Narcotics and Law Enforcement Affairs. Targeted to police officers, prosecutors, customs officers, and investigators, it is designed to help decision-makers across the law enforcement spectrum better understand and apply wildlife protection laws. It comes at a time when considerable global attention is on the DRC's mineral and forest resources and foreign investments are flowing into roads, railways, and other infrastructure projects.

"I didn't know that wildlife species are protected even outside their natural habitats," Bekoka said, acknowledging that the program equipped him with new knowledge and skills to combat illegal wildlife trafficking. Learning how traffickers change their concealment methods daily motivated him to be more vigilant in his daily searches.

Recently, a team of police officers who participated in the program seized 20 kilograms of pangolin scales and rescued three sitatunga antelopes at Kinshasa markets. They also arrested three traffickers, whose cases are now before the courts. "For our first field operation, it was emotional but rewarding," said Berthold Ofutanya, the unit commander. "We're developing the skills needed to make a real impact in fighting wildlife trafficking."

*Continued on next page >*



DRC: INSPECTOR THOMAS BILE BEKOKA TAKES NOTES AT A WILDLIFE INVESTIGATION & EMERGING CRIMES TRAINING IN MATADI. © AWF

### 2024 RESULTS: At a Glance

**39**  
Trainings

in

**5**  
Countries

(DRC, Ethiopia, Kenya, Tanzania, Uganda)

**1K+**

First responders, investigators, prosecutors & police officers trained

**68%**

Wildlife crime cases successfully resolved by judicial staff participating in AWF trainings

(Kenya and Tanzania)

**5M+**

Canine searches at airports and border crossings





**DRC:** THE PUBLIC PROSECUTOR AT THE HIGH COURT OF GOMBE SWEARS IN SEVEN NEW JUDICIAL POLICE OFFICERS WITH THE INSTITUT CONGOLAIS POUR LA CONSERVATION DE LA NATURE, THE DRC'S WILDLIFE AUTHORITY. THE SWEARING IN TOOK PLACE ON APRIL 27, 2024, IN KINSHASA, FOLLOWING THEIR COMPLETION OF AWF'S WILDLIFE JUDICIAL AND PROSECUTORIAL ASSISTANCE PROGRAM. © AWF



**DRC:** 2024 GRADUATES OF AWF'S WILDLIFE INVESTIGATION & EMERGING CRIMES PROGRAM, A TRAINING PROGRAM FOR AGENTS FROM LAW ENFORCEMENT THAT FOCUSED ON CITES REGULATIONS, SPECIES IDENTIFICATION, ILLEGAL TRADE DETECTION, AND HUMAN RIGHTS. © AWF

The Wildlife Investigation & Emerging Crimes program is part of a strategically designed set of integrated services, interventions, advocacy, and policy efforts AWF has developed to detect, deter, investigate, and prosecute wildlife crime. Currently, we are applying our counter wildlife trafficking approach in five countries: the DRC, Ethiopia, Kenya, Tanzania, and Uganda. In addition to training programs for law enforcement and the judiciary, we conduct wildlife policy and legislative analyses, provide court monitoring, and train and equip canine detection and deterrence teams.



“

Smart investments in international conservation don't just protect our environment. They reduce the threat of security challenges resulting from regional instability by strengthening local economies and lessening the draw of extremist groups while cracking down on the poaching and illegal wildlife trafficking that fund terrorism.

**CHRIS COONS**  
United States Senator (D-Delaware)



# Investing in African Changemakers

THE POWER OF THE MULTIPLIER EFFECT



KENYA: LEBOGANG MATLAKALA, AN AWF-WALL LEADERSHIP & MANAGEMENT FELLOW, ON A TREE-PLANTING FIELD TRIP DURING A 2024 FELLOWSHIP WORKSHOP IN NAIROBI. © CERTIFIED IMAGE

When Ann Wambui applied to be an AWF-Wall Leadership & Management Fellow, she was a wildlife biologist at Mugie Wildlife Conservancy in Kenya. Responsible for overseeing the implementation of field conservation technology tools, Wambui trained more than 80 rangers, most of whom were men.

“It was a challenge because in our patriarchal society women are not seen as leaders,” she explains. “But my experience in AWF’s fellowship program helped me build my inner self-confidence and to see challenges as opportunities. I learned my role as a leader was to empower those around me.”

Named Fellow of the Year in February 2024, Wambui is now a conservation officer at the Loisaba Conservancy in Kenya, managing a team of thirty on invasive species eradication.

The AWF-Wall Youth Leadership program has two tracks, one focusing on leadership and management training for young professionals and a second focusing on policymaking. Both are supported by the Wall Family Foundation. We also continue a tradition of supporting postgraduate research through the Charlotte Fellows program.

Other examples of empowering young leaders include the Second African Youth Summit on Biodiversity in September 2023, which we co-convoked in Morocco with the Africa chapter of the Global Youth Biodiversity Network. There, we supported African youth in developing concrete projects and plans to contribute to meeting global biodiversity goals across different regions of Africa.

People—young and old—are influenced by the media they consume. That is why we are increasing coverage of conservation across African social and traditional media channels. Our filmmaking program mentors young African filmmakers to

*Continued on page 36 >*



KENYA: ANN WAMBUI, AWF-WALL FELLOW OF THE YEAR, SPEAKS AT AN INTERGENERATIONAL DIALOGUE ON LEADERSHIP, MAY 2023. © CERTIFIED IMAGE

Africa is the world's youngest continent

70% of people are under age 35

The median age is 19





2024 AWF-WALL FELLOWS VISIT NGONG ROAD FOREST ASSOCIATION IN NAIROBI, KENYA, TO EXPLORE URBAN CONSERVATION CHALLENGES AND BRAINSTORM SOLUTIONS FOR BALANCING DEVELOPMENT WITH BIODIVERSITY CONSERVATION. © CERTIFIED IMAGE

2024 RESULTS: At a Glance

9

Early to mid-career African conservation filmmakers mentored

31

Early to mid-career managers & policy professionals supported

69

African journalists trained

6,500

school-age children introduced to conservation education

develop short conservation films. Currently, we support nine filmmaking projects exploring topics such as the coexistence of elephants and villagers around Kenya’s Lake Jipe and community-led landscape restoration efforts in Tanzania’s Kilombero Valley. We also invest in conservation journalism training for journalists based across Africa, this year working with reporters from Botswana, Kenya, Tanzania, Rwanda, and Uganda.

Most of our strategies are aimed at youth between the ages of 15 and 35—a major demographic in Africa, making up roughly one-third of the population. However, we also continue long-standing work to inspire the next generation of conservation leaders through conservation outreach programs in primary schools and wildlife clubs.

“

This is the time for Africa. The world stage is ready, and the youngest continent is ready to be heard. Now we need to give Africa’s youth opportunities to lead. Make no mistake, an investment in these young leaders is an investment in the world’s future.

CHARLES R. WALL  
Funder of the AWF-Wall Fellows program

Supporting Conservation Science

Over the years, AWF has funded graduate and post-graduate research and education for almost 100 researchers through the Charlotte Fellows program. Many have gone on to leadership positions in the conservation sector.

NOTABLE ALUMNI

Paula Kahumbu  
CEO, WildlifeDirect & a National Geographic Explorer

Jimmie Mandima  
Vice President, Global Programs, International Fund for Animal Welfare

Gladys Kalema-Zikusoka  
Veterinarian & Founder of Conservation Through Public Health

Fortunata Msoffe  
Senior Wildlife Conservationist & Ecologist, Tanzania National Parks



# Implementing a Rights-Based Approach to Conservation

A MAN WITH A MISSION... AND A MOTORBIKE



DRC: AWF'S DODO MOKE AND A DRIVER TRAVELING TO BILI-UELE ON A MOTORBIKE. SIX HUNDRED KILOMETERS OF DIRT ROAD SEPARATE BILI-UELE FROM KISANGANI, THE NEAREST CITY. © AWF

**D**odo Moke, AWF Senior Environmental and Social Safeguards Officer, travels over 15,000 kilometers each year to rural communities like those in the remote Bili-Uélé landscape in the northern part of the Democratic Republic of the Congo (DRC). The trip by motorbike can take five days, traveling up to 18 hours a day. The route is fraught with security checkpoints, near-impassible dirt roads, river crossings by dugout canoe, and unpredictable weather conditions. The nights are usually spent on the ground; he gave up his tent long ago.

The trials Moke faces in the field are sacrifices he is happy to make. “When I understood that I would never be able to give back to nature what she has given to me, I decided to dedicate my life to acting as her spokesperson and working for her conservation,” he shares. As the father of two daughters, his personal mission is to ensure a bright future for his children and future generations.

Trained as an economist with a Master’s in governance and human rights, Moke understands how good management translates to good economics. He has seen how past conservation efforts have infringed on peoples’ rights, creating economic strife and marginalization. That is why Moke is excited to lead implementation of our Rights-Based Approach.

He works with colleagues across AWF to integrate human rights norms into field programs, from planning and implementation to monitoring and evaluation. “We need to respect and acknowledge the basic rights of those who live off the land and steward it,” he explains. “We must sit down with communities, understand their perspectives, and help them create solutions for the issues they identify. We cannot just come in with a solution and force it on communities. That is not sustainable.”

*Continued on next page >*

## 2024 RESULTS: At a Glance

### 230

Rangers & scouts sensitized to rights-based conservation and use of the Complaint Management Mechanism

### 216

Community members trained as rights-based resource officers to support their communities

### 1.6K+

Indigenous People and Local Community (IPLC) members sensitized to their legal rights

“

What I appreciate about the implementation of the Complaint Management Mechanism is its inclusive aspect. Since it was set up, we are no longer pitted against each other like enemies. The local community and conservation stakeholders now have a platform for the peaceful resolution of conflicts, enabling everyone to act in strict compliance with their rights and duties.

**PAPY IKWA ILANGA**

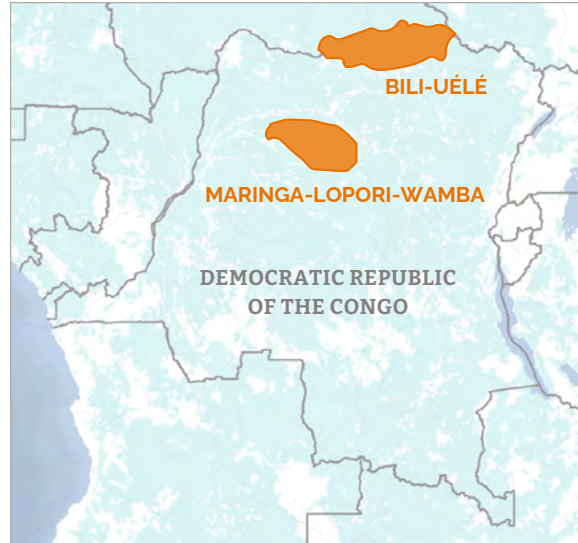
Community leader of the Boyela group, Democratic Republic of the Congo, Maringa-Lopori-Wamba landscape



In addition to trainings with wildlife authorities to ensure they are aware of the rights of Indigenous and local communities, AWF is supporting the establishment of a first-of-its-kind, community-led process to allow community members to seek redress from rights violations. In the Democratic Republic of the Congo, Moke partnered with communities to develop a way they can safely lodge and manage concerns (called a “complaint management mechanism”). As part of the process, community members determine how grievances should be collected and processed as well as who will sit on a committee to hear complaints and make decisions.

The results are promising. Recently, a farmer’s debt dispute with an eco-guard was successfully resolved through the community’s complaint committee. From 2022 to today, in Bili-Uélé and Maringa-Lopori-Wamba, the two landscapes in the DRC where Moke has established the complaint management mechanism, 23 complaints have been received. Local committees have resolved 13 and escalated ten criminal matters to authorities.

Building on Moke’s work, in November 2024, AWF landscape managers representing seven countries met in Ethiopia to develop a pilot project with partner PeaceNexus and begin online trainings with SwissPeace. The project will integrate peace and conflict sensitivity into existing rights-based conservation work across all AWF landscape-based field programs.



**Along with increasing communities’ security, rights-based conservation strategies increase security for wildlife. In Bili-Uélé, the complaint management mechanism allowed the community to anonymously report a potential poacher seen carrying an army-issued rifle large enough to take down an elephant. Authorities responded, and the poacher was arrested. In the past, community members would have feared retaliation from the poacher and ignored suspicious activity.**



**DRC: DODO MOKE MEETS WITH RESIDENTS OF BILI VILLAGE IN THE BILI-UÉLÉ LANDSCAPE. THEY ARE SPREADING OKRA ON THE GROUND BEFORE COOKING IT. THIS VILLAGE IS ONE WHERE MOKE ESTABLISHED A COMPLAINT MANAGEMENT MECHANISM, SUPPORTED BY THE EU NATURAFRICA PROGRAM. © AWF/ARIEL GAKUNGA**

“

We are impressed by how AWF embeds rights-based conservation and conflict sensitivity at the core of its organizational policies and operations on the ground. The work is making a tangible difference. We see how, even in contexts facing strong operational constraints, AWF staff pursue impactful conservation work by bringing people together and supporting local dialogue and trust-building. As risks of violent conflict rise and threaten the capacity to protect wildlife and their habitats, AWF’s transformative local practices and capacity to engage African leadership at all levels will make a critical difference in years to come.

**HELOISE HEYER**

*Conflict Sensitivity Lead & International Partnerships Manager, PeaceNexus Foundation*



# WHAT LEADERSHIP LOOKS LIKE

A leader is a decision-maker at any level of society who has the power to influence choices that benefit the long-term conservation of wildlife.

   	
JINA LA MRADI:	Mradi Jumuishi wa Mazingira na Ukuzaji Kilimo Endelevu
MTEKELEZAJI:	Mfuko wa Uhifadhi wa Wanyamapori na Jamii ya Igima
KAZI INAYOFANYIKA:	Uanzishaji na Usimamizi wa Kitalu cha Kakao
WANUFAIKA:	Wakulima wa kakao katika kijiji cha Igima
ENEO LA KITALU:	Igima
JINA LA WILAYA:	Kilombero
MUDA WA MRADI:	2017-2026

TANZANIA: WILLY AYUBU, INVESTOR AND FARMER IN THE KILOMBERO VALLEY LANDSCAPE. © AWF/ARIEL GAKUNGA



Leadership is a powerful word. It conveys a willingness to act and to bring others along with you—it conveys agency. That sense of agency does not just reside with heads of state or business leaders. We see it every day in the people we work with on the ground.



**OUMMA DJAOUDDJI** is one of four women nominated by her community in Cameroon's Faro landscape to be a TANGO leader. TANGO stands for "Association for Peaceful Management of Transhumance." Seasonal livestock movement, known as transhumance, harms crops and contributes to overgrazing and deforestation on community and conservation lands. This causes tension between pastoralist herders and local Cameroonian communities like Aouzi's. TANGO was formed to bridge the gap between subsistence farmers, local authorities, and herders.

"At first, the villagers were reluctant to join us or listen to our message. However, that did not deter us," Djaoudji explains. "The TANGO group now has significant influence in the villages." Thanks to TANGO, Faro National Park officials estimate conflict between herders and community members around the park has decreased by 62 percent. It has been so successful, AWF is bringing the TANGO concept to other landscapes facing transhumance pressures.



**CHARLES OKENY**, a prosecutor stationed at the Lake Mburo Conservation Area in Uganda, is a graduate of AWF's year-long Wildlife Judicial and Prosecutorial Assistance Program. This rigorous program addresses crucial aspects of wildlife law enforcement, investigation, and prosecution. It contributed to a pivotal moment in Okeny's career—the successful prosecution of five poachers responsible for killing a giraffe, resulting in landmark five-year prison sentences for the poachers.

Okeny's cases are strengthened by partnerships with a network of investigators and judicial police, all of whom received AWF training in proper evidence management to ensure admissibility in court. Before the program's implementation, conviction rates were hampered by inadequate evidence and procedural mistakes. Today, he manages an impressive monthly caseload of about 60 cases, with a conviction rate of around 80 percent.



When AWF offered sustainable agriculture training to farmers in the Kilombero landscape of Tanzania, **WILLY AYUBU** jumped at the opportunity. He was one of two thousand smallholder farmers who learned best practices in cocoa farming and how to establish a nursery. He started small, but each year he planted more, developing his small farm into a thriving business. This year, Ayubu grew more than 110,000 seedlings and anticipates 120,000 next year. He estimates that he has sold seedlings to over 3,000 farmers throughout the region. In partnership with another investor, Ayubu has planted 88 acres with cocoa and banana trees. The farm employs around 50 people, almost two-thirds of them women, and his own income has tripled since starting his business.





In 2021, while working at CGTN Africa, **LUCIA MOKI** attended AWF's journalism training, a pivotal experience that improved her ability to pitch impactful conservation stories to her editors. The training deepened her understanding of resilient ecosystems, empowering her to craft compelling narratives that resonate from an African perspective.

Now a News Interview Producer at TRT WORLD (Turkish Radio and Television Corporation), Moki uses these skills to shape global conversations through TRT Afrika's flagship climate change program, "Just 2 Degrees," which reaches 8.5 million global viewers. Over the past year, she has produced 11 in-depth stories addressing African conservation topics such as species protection, climate resilience, and environmental justice.



While growing up in his Ogiek community, **DANIEL KOBEL** witnessed firsthand the disregard for Indigenous rights. The Ogiek, traditionally hunter-gatherers dependent on forest resources, have land rights on the fringes of Kenya's highland forests, but policies of converting communal land to individual ownership led to much of it being sold off to others.

After attending university, Kobei founded the Ogiek Peoples' Development Program, an NGO that advocates for the human and land rights of the Ogiek community. As Executive Director, he played a key role in winning land tenure rights in the Mau Forest, the Ogiek's ancestral lands.

Kobei is an active member of the African CSOs Biodiversity Alliance (ACBA), which AWF founded. ACBA has elevated his voice in regional and global policy processes. He also serves as the chair of the International Indigenous Forum on Biodiversity and represents Indigenous Peoples under the Collaborative Partnership on Sustainable Wildlife Management. In these roles, he advocates for the inclusion of Indigenous perspectives in global biodiversity conservation discussions and policy.



"I like the bonobos because they help us," explains **MBOYO ELOMBE WEEKEND**, a sixth-grade student at the Ilima School in the Democratic Republic of the Congo's remote Maringa-Lopori-Wamba landscape. Bonobos are an endangered great ape found only in her country, with populations in decline due to habitat loss and bushmeat hunting. Since AWF established the school in 2015, more than 1,400 children have participated in the conservation education program, gaining knowledge that they share with their families. For Mboyo's community, conservation education along with a community-wide commitment not to illegally hunt, training in sustainable agriculture practices, and the development of women's livelihood opportunities have contributed to an incredible 400 percent increase in the bonobo population in the nearby Lomako Reserve.



# AWF STAFF LEADERSHIP SPOTLIGHT



## ANTHONY AGBOR

*AWF Landscape Director, Faro, Cameroon*

As a child in a remote village in southwest Cameroon, Anthony Agbor developed a deep appreciation for nature and conservation. “Our village was isolated, and we often saw monkeys and other wildlife around us,” he recalls. Influenced by traditional beliefs and his involvement in a conservation club during secondary school, Agbor decided to pursue a career in primate research.

After earning his Master’s of Research from the Max Planck Institute for Evolutionary Anthropology in Germany, Agbor managed large-scale field research operations across multiple countries for the Institute. His career evolved as he sought to translate research findings into actionable conservation strategies. He moved on to gain extensive experience coordinating community projects and engaging stakeholders across Africa.

In March 2024, Agbor joined AWF as director for the Faro landscape. With over 17 years of experience, he aims to implement AWF’s strategy, funded with support from the European Union, to stabilize security for Cameroon’s Faro National Park. The park is part of a larger protected area complex that crosses into Nigeria. “I believe that real transformation begins when local communities understand how wildlife and habitats directly benefit their lives. This is the cornerstone of my approach to fostering meaningful and inclusive conservation.”

“Supporting African leadership and fostering resilient communities to conserve Cameroon’s rich biodiversity is more than a professional goal—it’s a deeply personal mission.”

ANTHONY AGBOR



**CAMEROON:** THE FARO RIVER IS IN THE NORTHEASTERN SECTION OF FARO NATIONAL PARK. IT IS A TRIBUTARY OF THE BENUE RIVER, AN IMPORTANT SOURCE OF WATER FOR MORE THAN 10 MILLION PEOPLE IN CAMEROON AND NIGERIA. WATER FLOWS FROM THE FARO RIVER HAVE BEEN DECREASING, DUE TO CLIMATE CHANGE PRESSURES AND LIVESTOCK EROSION OF THE RIVERBANK. © AWF/ARIEL GAKUNGA





# ADDRESSING CLIMATE CHANGE

“

We live in a climate-stressed world, and Africa is particularly affected by climate change. It remains important that the Youth—who make up 70% of the continent's population—find opportunities to build their futures through climate resilient, green growth strategies that respond to current realities and lead to positive outcomes for themselves and the planet.

BIRGIT PICKEL

*Director-General for Africa, German Federal Ministry for Economic Cooperation and Development (BMZ)*

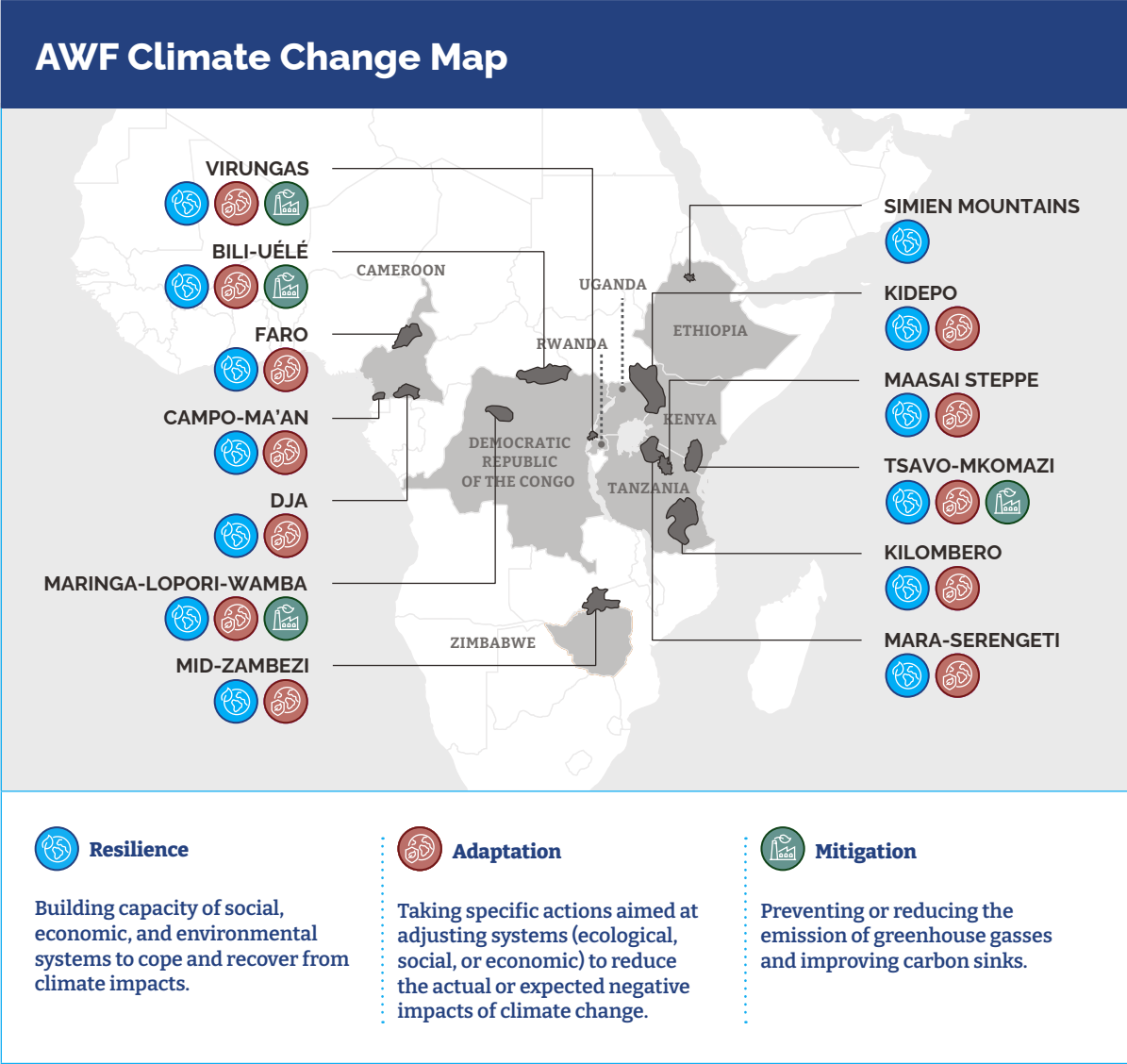
TANZANIA: AWF IS WORKING IN THE KILOMBERO VALLEY TO BUILD CLIMATE RESILIENCE AND ADAPT TO THE CHANGING CLIMATE. PROJECTS INCLUDE CLIMATE-SMART AGRICULTURE, LIVESTOCK VALUE CHAINS, AND WATERSHED RESTORATION. © AWF/ARIEL GAKUNGA



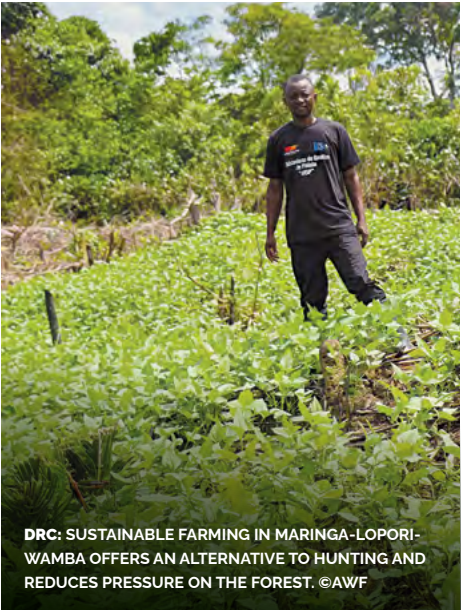
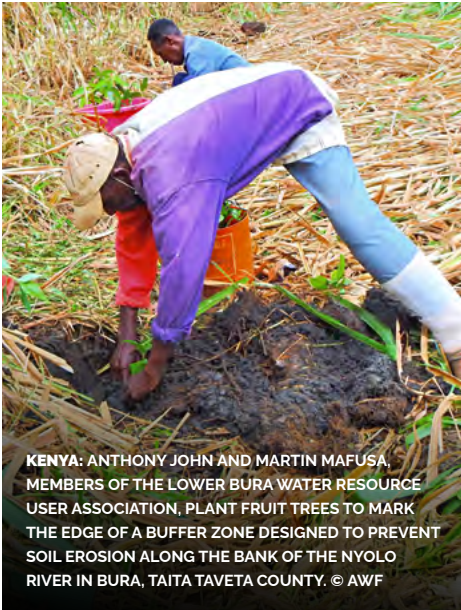
According to the World Bank, at the current rate of global warming, by 2050 86 million Africans will be displaced or forced to migrate due to climate change.

But climate change impacts not only affect people. They are also responsible for shifting wildlife habitats and migration routes, another reason why conservation strategies that go beyond the boundaries of protected areas are essential. And while Africa has never been a major source of global emissions, that could change if Africa pursues the same industrialization path others have followed. That is why we believe it is essential to invest in local communities and build sustainable economies that value nature and healthy ecosystems.

Our strategies promote sustainable growth solutions for Africa with on-the-ground programs that contribute to climate resilience, adaptation, and mitigation.



## Examples of...



## Resilience

In Kenya's Tsavo landscape, severe droughts in 2023 led to record animal deaths of both wildlife and livestock. In response, AWF is partnering with the Land Development and Governance Institute and Indigenous Livelihoods Enhancement Partners, funded by Sida, to reactivate three water resource user associations.

These associations focus on sharing management and conservation of water resources. This includes implementing grazing and irrigation designations, user restrictions, and erosion prevention measures. The associations have improved fresh water availability for 40,000 people, as well as for agriculture, livestock, and wildlife, contributing to more positive human-wildlife coexistence. Other climate resilience work is taking place in Cameroon, the DRC, Ethiopia, Rwanda, Tanzania, Uganda, and Zimbabwe.

## Adaptation

In Tanzania's Kilombero landscape, shifting weather patterns have created hotter and drier conditions for farmers. We assist more than 5,000 farmers with climate-smart agriculture techniques such as water management, drought-resistant crop varieties and farm management practices, crop rotation, and agroforestry. This approach helps boost productivity while reducing deforestation.

Additionally, terraced gardens are providing effective erosion control and improving water retention methods for hillside farms. Overall, farmers have seen a 36 percent increase in crop yields and a 23 percent rise in household incomes. The program is a model for scaling sustainable practices with the Southern Agriculture Growth Corridor of Tanzania. Other climate-smart agriculture projects, including livestock value chains and crops such as cocoa and cotton, are taking place in Cameroon, the Democratic Republic of the Congo, Kenya, Rwanda, Uganda, and Zimbabwe.

## Mitigation

Preventing deforestation and restoring forests are central strategies for conserving wildlife habitat. In the Democratic Republic of the Congo's Maringa-Lopori-Wamba landscape, our support of two protected areas and four community forests helps to conserve more than 526,000 hectares of Congo Basin rainforest.

Community engagement includes bringing sustainable agriculture techniques to local farmers to reduce pressure on the forest. The results are promising. Satellite-based analysis indicates that the deforestation rate across the six sites declined 22 percent from 2021-2023, compared to the prior three-year period. Other mitigation work is taking place in Kenya, Rwanda, and Tanzania.





# INDEX OF OUR WORK

“

AWF is an invaluable partner in advancing Africa's biodiversity agenda in global negotiations. Their crucial support allowed us to more powerfully and inclusively represent the continent's interests during the formation of the Global Biodiversity Framework.

OUSSEYNOU KASSE

*Chair of the African Group of Negotiators  
for the Convention on Biological Diversity*

**DRC:** BILI VILLAGE IS PART OF THE BILI-UELE CONSERVATION LANDSCAPE IN NORTHEASTERN DRC, A REMOTE EXPANSE OF PROTECTED AREAS, RAINFOREST, AND COMMUNITY LAND SPANNING 78,000 SQUARE KILOMETERS, LARGER THAN BELGIUM AND THE NETHERLANDS COMBINED. © AWF



AWF's support of leaders engaged in business, managing land, conserving wildlife, countering wildlife trafficking, and enacting policy spans the continent and beyond. Our country and landscape programs focus on specific countries and transboundary areas, emphasizing conservation solutions created in partnership with local people.

Meeting Global Targets

Many of our programs directly contribute to meeting Global Biodiversity Framework (GBF) targets and specific Sustainable Development Goals (SDG). They are identified by number in this index.



The **Global Biodiversity Framework** is a set of recommendations and goals finalized in Montreal, Canada, in 2022 during the 15th meeting of the Convention on Biological Diversity (COP15). It was signed by 196 countries and is guiding much of the world's global investments in conservation.

1. Plan and Manage all Areas to Reduce Biodiversity Loss

2. Restore 30% of all Degraded Ecosystems

3. Conserve 30% of Land, Waters and Seas

4. Halt Species Extinction, Protect Genetic Diversity, and Manage Human-Wildlife Conflicts

5. Ensure Sustainable, Safe and Legal Harvesting and Trade of Wild Species

6. Reduce the Introduction of Invasive Alien Species by 50% and Minimize Their Impact

7. Reduce Pollution to Levels That Are Not Harmful to Biodiversity

8. Minimize the Impacts of Climate Change on Biodiversity and Build

9. Manage Wild Species Sustainably to Benefit People

10. Enhance Biodiversity and Sustainability in Agriculture, Aquaculture, Fisheries, and Forestry

11. Restore and Enhance Nature's Contributions to People

12. Enhance Green Spaces and Urban Planning for Human Well-Being and Biodiversity

13. Increase the Sharing of Benefits from Genetic Resources, Digital Sequence Information and Traditional Knowledge
14. Integrate Biodiversity in Decision-Making at Every Level

15. Businesses Assess, Disclose and Reduce Biodiversity-Related Risks and Negative Impacts

16. Enable Sustainable Consumption Choices to Reduce Waste and Overconsumption

17. Strengthen Biosafety and Distribute the Benefits of Biotechnology

18. Reduce Harmful Incentives by at Least \$500 Billion per Year, and Scale Up Positive Incentives for Biodiversity

19. Mobilize \$200 Billion per Year for Biodiversity From all Sources, Including \$30 Billion Through International Finance

20. Strengthen Capacity-Building, Technology Transfer, and Scientific and Technical Cooperation for Biodiversity

21. Ensure That Knowledge Is Available and Accessible to Guide Biodiversity Action

22. Ensure Participation in Decision-Making and Access to Justice and Information Related to Biodiversity for all

23. Ensure Gender Equality and a Gender-Responsive Approach for Biodiversity Action



The **United Nations' 17 Sustainable Development Goals**, or **SDGs**, are part of the 2030 Agenda for Sustainable Development and illustrate the connections between environmental, social, and economic aspects of sustainable development.

1. No Poverty

2. Zero Hunger

3. Good Health and Well-Being

4. Quality Education

5. Gender Equality

6. Clean Water and Sanitation

7. Affordable and Clean Energy

8. Decent Work and Economic Growth

9. Industry, Innovation and Infrastructure
10. Reduced Inequalities

11. Sustainable Cities and Communities

12. Responsible Consumption and Production

13. Climate Action

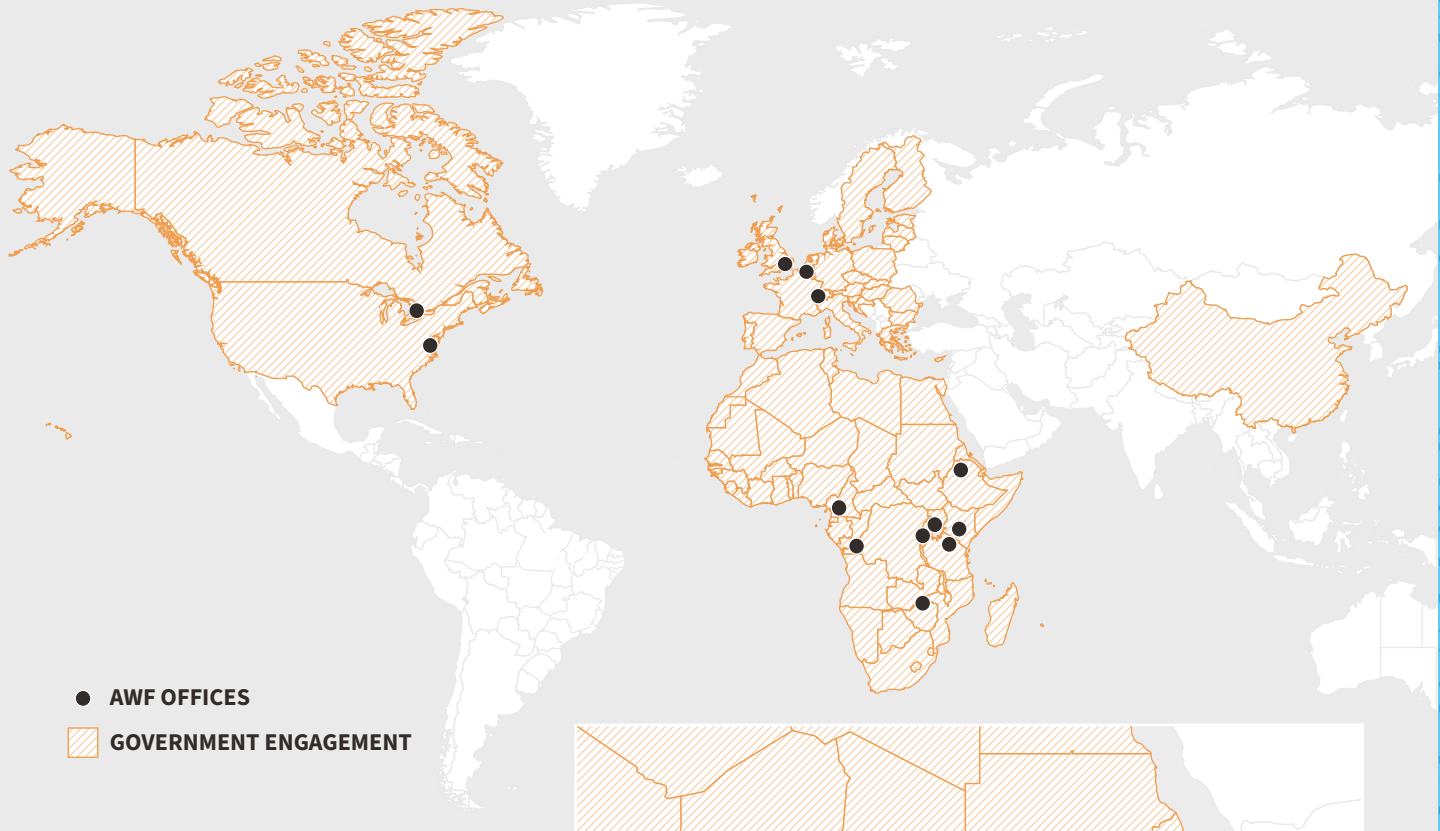
14. Life Below Water

15. Life on Land

16. Peace, Justice and Strong Institutions

17. Partnerships for the Goals

Where We Work



- AWF OFFICES

▨ GOVERNMENT ENGAGEMENT

Landscapes with Field Programs

1. BILI-UÉLÉ

2. CAMPO-MA'AN

3. DJA

4. FARO

5. KIDEPO

6. KILOMBERO

7. MAASAI STEPPE

8. MARINGA-LOPORI-WAMBA

9. MID-ZAMBEZI VALLEY

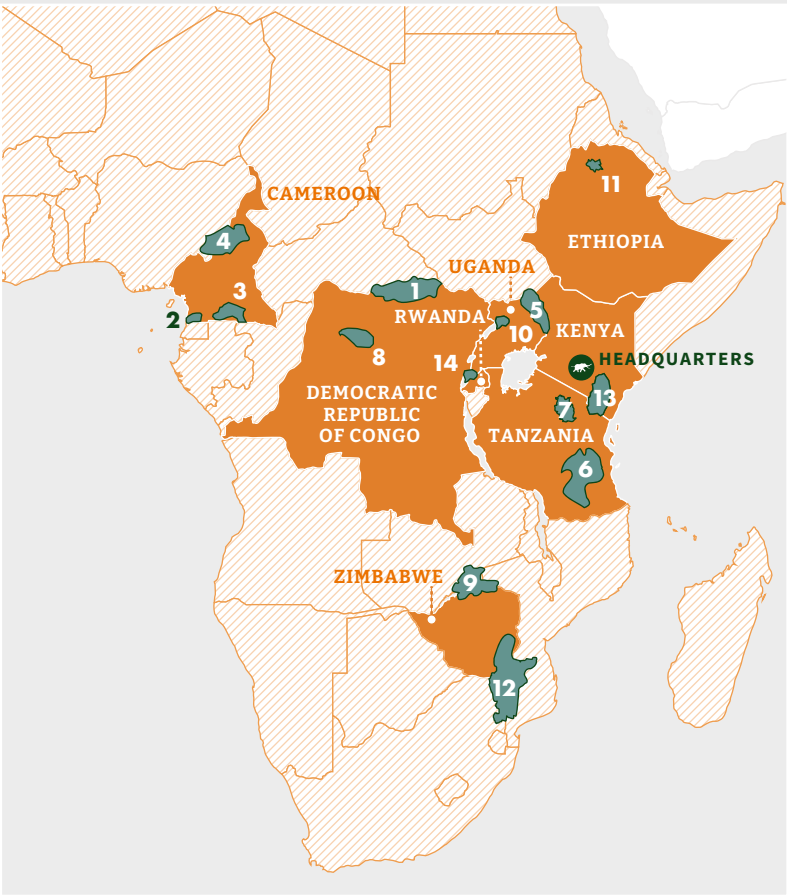
10. MURCHISON FALLS

11. SIMIEN MOUNTAINS

12. SOUTHEAST LOWVELD

13. TSAVO-MKOMAZI

14. VIRUNGAS





# Global & Pan-African Programs

## BIODIVERSITY ECONOMIES

AWF helps local communities and governments unlock value and benefits from wildlife and habitat conservation. We support countries in the recovery of nature-based tourism and landscape restoration, diversification of sustainable livelihoods, private-sector engagement for building sustainable economies that include wildlife, and the national valuation of biodiversity as a sector contributing to GDP. In addition, we provide entrepreneurial and business development training for nature-based businesses and livelihoods across many of our landscape programs.

GBF:	1, 5, 7, 9, 10, 14, 15, 17, 18, 19, 20
SDG:	1, 7, 8, 10, 12, 15
Partners:	European Union, Swedish International Development Cooperation Agency, TUI Care Foundation, USAID, Danish Church Aid, African Leadership University School of Wildlife Conservation, Conservation Strategy Fund, Ministry of Environment, Climate and Wildlife (Zimbabwe), Ministry of Environment and Climate Change (Sierra Leone), Inkomoko, IUCN, Boma, Okavango Capital, Village Enterprise, SACOLA

### Climate Smart Agriculture

We support smallholder farmers to improve yields, access markets, and reduce post-harvest losses in ways that protect and restore forest, wetland and grassland systems as part of an integrated landscape approach that delivers for people and wildlife.

Locations:	Cameroon, Democratic Republic of the Congo, Kenya, Tanzania, Uganda, Zimbabwe
Partners:	European Union, Swedish International Development Cooperation Agency, Danish Church Aid, IUCN

### Micro Enterprise Incubation

We support budding entrepreneurs with the skills they need to develop and invest in new business ideas that link sustainable resource management to economic development opportunities. This work is particularly impactful for remote rural communities, who are often hard to reach through traditional business incubation programs.

Locations:	Democratic Republic of the Congo, Kenya, Rwanda
Partners:	Swedish International Development Cooperation Agency, Inkomoko, Boma, Village Enterprise, SACOLA

### Investment Blueprints

As part of our signature landscape approach, we produce investment blueprints that shape opportunities for enterprise solutions to deliver on conservation and development outcomes. These blueprints help local leaders engage business partners and leverage private finance to deliver jobs and economic growth while protecting and restoring natural resources.

Locations:	Rwanda, Zimbabwe
Partners:	Rwanda Development Board, Musanze District, Inkomoko, SACOLA, Swedish International Development Cooperation Agency

### Business Engagement

We partner with businesses committed to contributing to conservation outcomes. The business acumen helps us to innovate and scale ways of harnessing markets to sustain ecosystems and biodiversity, incentivize the protection and restoration of wildlife habitat, and reduce threats to biodiversity from human activities.

Locations:	Cameroon, Democratic Republic of the Congo, Kenya, Rwanda, Tanzania, Uganda, Zimbabwe
Partners:	European Union, Swedish International Development Cooperation Agency, Danish Church Aid, IUCN

## COUNTER WILDLIFE TRAFFICKING

Fighting illegal wildlife crime requires a multi-pronged approach that emphasizes developing capacity within wildlife authorities and other law enforcement entities. Our strategic set of services, interventions, advocacy, and policy efforts are designed to detect, deter, investigate, and prosecute wildlife crime. We also support countries in developing strong policies and legislation relating to wildlife crime. To better enforce those laws and policies, we offer an array of programs and interventions, including the Wildlife Investigation & Emerging Crimes program, the Wildlife Judicial and Prosecutorial Assistance Program, court monitoring, and training of detection and deterrence canine teams.

GBF:	4, 5, 9
SDG:	15, 16, 17
Partners:	CITES, US State Department, US Fish and Wildlife Service, World Bank Group

### Detection and Tracker Dogs

We train canine teams to deter poaching and detect illegal wildlife trafficking at transportation hubs. Dogs and handlers from national wildlife authorities are both trained and AWF provides wellness oversight of the dogs once they are deployed by wildlife authorities.

Locations:	Botswana, Cameroon, Ethiopia, Kenya, Mozambique, Tanzania, Uganda
Partners:	GIZ, USAID, BIOFUND, Department of Wildlife and National Parks (Botswana), Ethiopian Wildlife Conservation Authority, Kenya Wildlife Service, Ministry of Forests and Wildlife (Cameroon), National Administration for Conservation Areas (Mozambique), Peace Parks Foundation (Mozambique), Tanzania National Parks Authority, Tanzania Wildlife Management Authority, Uganda Wildlife Authority

### Wildlife Investigation & Emerging Crimes Program

These trainings and programs range from 3-day training courses to year-long mentorship programs. They are targeted to police officers, prosecutors, customs officers, and investigators to help them identify, investigate, and gather evidence of illegal wildlife crime.

Locations:	Democratic Republic of the Congo, Ethiopia, Kenya, Tanzania, Uganda
Partners:	GIZ, USAID

### Wildlife Judicial and Prosecutorial Assistance Program

These trainings and programs range from 3-day training courses to year-long mentorship programs. They are targeted to judges and prosecutors in the courts systems to help them build cases, interpret wildlife laws, and impose appropriate sentences.

Locations:	Democratic Republic of the Congo, Ethiopia, Kenya, Tanzania, Uganda
Partners:	GIZ, USAID

## FELLOWSHIPS & PROFESSIONAL TRAINING

One way AWF invests in Africa's young people is through fellowships and training that provide skills and professional opportunities. AWF fellowship programs included the AWF-Wall Leadership & Management Fellows for developing leadership skills, the AWF-Wall Policy Fellows for gaining conservation policy expertise, Charlotte Fellows for graduate and post-graduate research, and the African Conservation Voices Producers Lab in partnership with NEWF, offering mentorship and training for mid-career filmmakers. We also invest in conservation journalism training for African journalists.

GBF:	20, 22, 23
SDG:	1, 4, 5, 8, 10, 13, 14, 15

### African Conservation Voices Producers Lab

This filmmaking mentorship program is designed to help mid-career African filmmakers make short conservation films. We currently support nine fellows creating short films about conservation issues relevant to landscapes where AWF works.

Partners:	National Geographic Society; Nature, Environment, and Wildlife Filmmakers (NEWF)
-----------	--

### Charlotte Fellows

The program focuses on offering support to qualified staff and students in Africa to attain post-graduate training at the Master's or PhD degree level. Two Charlotte fellows, one from Kenya and one from Uganda, are currently supported.

### AWF-Wall Youth Leadership Fellowships

We offer two nine-month fellowships: the AWF-Wall Leadership & Management Fellows Program and the AWF-Wall Policy Fellows Program, supported by the Wall Family Foundation. Each enrolls 15 fellows, building their leadership skills through training, networking, and hands-on professional experience.

Partners:	United Nations Environment Program, WWF
-----------	---

## GLOBAL LEADERSHIP

AWF partners with civil society, youth networks, protected area officials, and government to influence policy decisions, at local, national, regional, pan-African, and global levels. As part of this effort, we support networks such as the Africa Protected Area Directors, the African CSOsy Biodiversity Alliance, and the Global Youth Biodiversity Network. We facilitate stakeholder engagement, secure endorsements from African institutions and leaders, and foster connections with international biodiversity agencies. Additionally, we support the convening of conferences, workshops, and meetings with stakeholders to drive dialogue and build consensus for action. The Wall fellowships are managed by this team, as are our strategies to reach new generations of changemakers through conservation education to primary school-age children.

GBF:	1, 2, 3, 5, 8, 9, 10, 11, 12, 13, 14, 15, 16, 17, 19, 20, 21, 22, 23
SDG:	1, 4, 5, 7, 12, 13, 14, 15, 16, 17
Partners:	French Biodiversity Agency, GIZ, IUCN, Stichting Nederlandse Vrijwilligers (SNV), Swedish International Development Cooperation Agency

### Africa Protected Area Directors Network (APAD)

AWF established and is now secretariat of this network of representatives from national authorities overseeing 8,932 Protected and Conserved Areas (PCAs) across Africa.

Partners:	African Civil Society Biodiversity Alliance, African Development Bank Group Secretariat, Africa Protected Areas Congress, African Union Commission, Alliance of Indigenous People and Local Communities for Conservation in Africa, Campaign for Nature, High Ambition Coalition for Nature and People, French Biodiversity Agency, German Federal Ministry for the Environment and Consumer Protection, IUCN, WWF Youth Committee, United Nations Convention on Biological Diversity Youth Committee
-----------	---

### Classroom Africa

We are empowering new generations of African conservationists through after-school programs and wildlife clubs aimed at introducing conservation to primary and secondary school children.

Partners:	Classroom Africa School Partners: Adsigne Primary School (Ethiopia), Ilima Primary School (DRC), Kidepo Primary School (Uganda), Manyara Ranch Primary School (Tanzania)
-----------	--



Country & Landscape-Level Programs

CAMEROON

AWF is partnering with Cameroon's Ministry of Forestry and Wildlife to develop principles and conditions for how local communities can be involved in the management of protected areas. We lead across the ministry's technical and financial partners, integrating insights gained by ourselves and other conservation organizations, including WCS and WWF, with the goal of having a new policy adopted by the government next year.



Campo Ma'an

In this landscape in southwestern Cameroon, AWF is improving park management and promoting ecotourism, strengthening anti-poaching measures, monitoring wildlife—including establishing community-based great ape monitoring—and improving community livelihoods through sustainable agriculture and the creation of markets for non-timber forest products. In addition, as part of our rights-based work, we have established a grievance and complaint management committee for local communities to voice concerns and participate in park management.

GBF:	1, 2, 3, 5, 8, 9, 10, 11, 12, 13, 14, 15, 16, 17, 19, 20, 21, 22, 23
SDG:	1, 4, 5, 7, 12, 13, 15, 16, 17
Partners:	Ministry of Forestry and Wildlife, Fondation pour l'Environnement et le Developpement au Cameroun, GEF, KfW Development Bank, Ministry and Wildlife Common Fund Resources (Cameroon), People's Trust for Endangered Species, WWF-Cameroon



Dja

This landscape in south-central Cameroon is part of the Congo Basin rainforest. AWF is integrating conservation and community well-being through rights-based training, improvements in management of the Dja Faunal Reserve, anti-poaching support, and the development of livelihood opportunities tied to sustainable agriculture and non-timber forest products. Completion of a project with the Nancy-Carroll Draper Charitable Foundation included outreach to local communities to help them understand the reserve's boundaries and activities allowed within and around it. With greater security in the reserve, this year observations of wildlife increased significantly for chimpanzees, elephants, and gorillas. Food security for a local village previously dependent on bushmeat increased with the introduction of a fishpond and fish farming.

GBF:	1, 2, 3, 5, 8, 9, 10, 11, 12, 13, 14, 15, 16, 17, 19, 20, 21, 22, 23
Partners:	European Union, Nancy-Carroll Draper Charitable Foundation, UNESCO, APIFED, Olam Food Ingredients, Telcar



Faro

Straddling Cameroon and Nigeria, the Faro landscape is part of a large protected area complex. AWF is extending activities begun during a five-year program supported by ECOFAC-6 to reduce poaching and strengthen management of Cameroon's Faro National Park. This includes implementing a community-led program called TANGO to promote understanding and reduce conflict between local residents and seasonal livestock herders. We also support enterprise development and sustainable livelihood opportunities, including establishing an agricultural center and training Indigenous Mbororo community members to run the center's plant nursery. This year crop processing equipment was donated to women of the Mbororo community, and we increased access to clean water by adding water sources at a school, police station, community center, and the yard of the local community leader's home (a frequent community gathering spot).

GBF:	1, 2, 3, 5, 8, 9, 10, 11, 12, 13, 14, 15, 16, 17, 19, 20, 21, 22, 23
SDG:	1, 3, 4, 5, 6, 7, 12, 13,14, 15, 16, 17
Partners:	Conserve Global, European Union, Noe

DEMOCRATIC REPUBLIC OF THE CONGO (DRC)

AWF is the longest-running boots-on-the-ground conservation organization in the country. Our work is tied to national priorities under the DRC REDD+ National Fund (FONAREDD) and designed to contribute to global climate and biodiversity targets.



Bili-Uélé

Our work in this extremely remote landscape in northern DRC is focused on supporting the security of local communities through rights-based training and interventions; decreasing tension between subsistence farmers, local authorities, and pastoralist herders with the community-led TANGO program; reducing poaching and illegal wildlife trafficking around the Bili Uéré Protected Area through support to the Congolese wildlife authority; and investing in protected area and community infrastructure.

GBF:	1, 2, 3, 5, 8, 9, 10, 11, 12, 13, 14, 15, 16, 17, 19, 20, 21, 22, 23
SDG:	5, 8, 12, 13, 15, 16, 17
Partners:	European Union, Institut Congolais pour la Conservation de la Nature, Parc AgroIndustriial Dingila, EcoTransferts, Juristes pour l'Environnement au Congo, Centre de Surveillance de la Biodiversité de l'Université de Kisangani



Maringa-Lopori-Wamba

This landscape in northwestern DRC is part of the Congo Basin rainforest. This year, we finished renovations of an elementary school first built as part of a forest management conservation covenant. Rights-based sensitization with local communities and rights-based trainings with authorities continue, and there is now a complaint mechanism for communities living near the Lomako Protected Area. In addition, we continue investments in sustainable livelihoods and support small enterprises with an emphasis on empowering women. We also encourage sustainable agriculture practices to reduce deforestation. Our partnership with wildlife authorities continues with wildlife monitoring and counter wildlife trafficking activities in the Lomako Protected Area and the Iyondji Community Bonobo Reserve.

GBF:	1, 2, 3, 5, 8, 9, 10, 11, 12, 13, 14, 19, 20, 21, 22, 23
SDG:	1, 3, 4, 5, 15, 17
Partners:	ARCUS Foundation, Centre pour la Protection de l'Environnement et le Développement, Institut Congolais pour la Conservation de la Nature

ETHIOPIA

At the national level, we are collaborating with the Ethiopian Wildlife Conservation Authority on a comprehensive conservation plan for the vulnerable Walia ibex. In addition, we provide support for the Authority's national planning and reporting platforms and serve as the secretariat for the Federal Regional Park Advisory Committee. Our engagement extends to offering strategic guidance as part of the National Steering Committee and the State Think Tank group.



Simien Mountains

Due to civil unrest our field office in northern Ethiopia was closed from August 2023 – March 2024. Work, however, continues. We are improving conditions at the local elementary school, including adding smokeless cooking stoves as part of a school meal program, and providing better access to clean water for the school and people living nearby. When wildlife monitoring revealed concerning population trends for Walia ibex, we began a community outreach program on the importance of not killing Walia ibex. We also provided vaccinations to local livestock to reduce spread of a disease deadly to the species. Other community engagement includes forest restoration efforts and land rehabilitation projects to reverse erosion and land degradation. The landscape was also host to the launch of rights-based training or AWF landscape directors with PeaceNexus.

GBF:	1, 2, 3, 5, 8, 9, 10, 11, 12, 13, 14, 15, 16, 17, 19, 20, 21, 22, 23
SDG:	1, 4, 5, 6, 7, 12, 13, 15, 16, 17
Partners:	IFAW, KfW Development Bank, US Fish and Wildlife Service



# Country & Landscape-Level Programs

## KENYA

At the national level we consult on economic development strategies impacting wildlife corridors and ecosystem services, including serving on the technical team developing Kenya's National Biodiversity Strategy and Action Plans, where we successfully advocated to include national governmental targets for increasing human-wildlife coexistence as well as rangeland restoration. This year marked the adoption of Kenya's five-year Species Recovery and Action Plan for Giraffes, which AWF collaborated on as technical advisors. Currently, we participate on Kenya's National Rhino Management Committee.



### Tsavo-Mkomazi

The Tsavo-Mkomazi landscape straddles the boundary between Kenya (Tsavo) and Tanzania (Mkomazi). It is one of the world's largest protected areas. Tsavo is home to over a third of Kenya's elephants and nearly a fifth of its black rhinos. We are partnering with communities to identify strategies for increasing human-wildlife coexistence, with water scarcity identified as a major stressor. To address this, we are increasing access to fresh water for households, livestock, and wildlife. This includes supporting better water resource management of water catchments and riparian areas (e.g. Bura River and Lumi Rivers), an important source of water for Taita Sanctuary and Lake Jipe respectively. We also support forest conservation and provide irrigation to support high-value crops grown by a community cooperative.

GBF:	1, 2, 3, 5, 8, 9, 10, 11, 12, 13, 14, 15, 16, 17, 19, 20, 21, 22, 23
SDG:	1, 4, 5, 6, 7, 12, 13, 15, 16, 17
Partners:	Swedish International Development Cooperation Agency, Elephant Cooperation, TUI Care Foundation, GIZ, UK Partnering for Accelerated Climate Transitions, Center for International Forestry Research and World Agroforestry, County Government of Taita Taveta, Cottar Group, Diwadane Farmers Cooperative, Indigenous Livelihood Enhancement Partners, IFAW, Land Development and Governance Institute, Nature's Path, Taita Hills Wildlife Sanctuary, Taita Taveta Wildlife Conservancies, US Bureau of International Narcotics and Law Enforcement Affairs, Water Resource Authority, Downforce Technologies

## RWANDA

We are partnering with the government of Rwanda on a comprehensive conservation and development master plan for Volcanoes National Park and surrounding communities (the Virungas landscape). The plan is being reviewed by stakeholders prior to finalization next year, as we move forward on implementing our "proof of concept" pilot project in the landscape.



### Virungas

As part of our pilot project to improve people's lives and increase habitat for wildlife in Volcanoes National Park, a community land valuation and compensation plan was approved by the Musanze District Council (community leaders of the town closest to the park). The process included intense socialization of the plan with local communities, applying best practices of Free, Prior, and Informed Consent. We are contributing to economic growth strategies identified in the master plan through a program encouraging the formation of nature-based community businesses. We are also mobilizing resources for climate-resilient agriculture projects, including one focusing on empowering women. Finally, we are supporting the government in developing terms of reference for smart green villages to improve the standard of living for people affected by the park's expansion.

GBF:	1, 2, 3, 5, 8, 9, 10, 11, 12, 13, 14, 15, 16, 17, 19, 20, 21, 22, 23
SDG:	1, 3, 4, 5, 8, 7, 12, 13, 15, 16, 17
Partners:	Ministry of the Environment, Conservation Heritage Turambe, Ecoplanet Bamboo, Eco Excellency, Holland Greentech, Inkomoko, Mass Design Group, Rwanda Development Board, SABYINYO Community Association, University of Rwanda, Vanguard Economics

## TANZANIA

We presented to the Ministry of Natural Resources and Tourism on benefit sharing for open wildlife ranches, based in part on the success of our work with Manyara Ranch. This opens a new conservation model to Tanzania and a pathway for the Manyara model to be replicated elsewhere in the country. In addition, we are contributing to the National Black Rhino Action Plan and guidelines for securing wildlife corridors, dispersal areas, buffer zones and migratory routes.



### Kilombero Valley

The Kilombero Valley in southern Tanzania, part of the Southern Agricultural Growth Corridor, produces over half of the country's food but faces significant ecological challenges due to climate change and unsustainable land use. Since 2014, we have been collaborating with local communities and commercial farmers on land-use planning, human-wildlife conflict prevention, and adopting sustainable farming practices. This includes improving access to financial institutions and helping families diversify their incomes, both to increase earnings and reduce pressure on land and water resources. Recent watershed restoration work includes participation in a coalition of institutions focused on improving ecosystem connectivity. Additionally we are engaging local district councils to develop a nature-based solutions strategy and network to link stakeholders and conservation efforts.

GBF:	1, 2, 3, 5, 8, 9, 10, 11, 12, 13, 14, 15, 16, 17, 19, 20, 21, 22, 23
SDG:	1, 5, 6, 7, 12, 13, 15, 16, 17

Partners: Swedish International Development Cooperation Agency, Government of Tanzania, IUCN, Stichting Nederlandse Vrijwilligers (SNV), Rufiji Basin Water Board, Kilombero Sugar Company, Kilombero Community Charitable Trust, College of African Wildlife Management (Mweka), Tanzania Agricultural Research Institute, National Land Use Planning Commission, Tanzania Forest Services Agency, Tanzania Wildlife Authority, Kilombero Organization for Community Development, ILUMA Wildlife Management Area, Associazione Mazingira, Mazingira ni Uhai Foundation, Tanzania Electrical Supply Company, Southern Agricultural Growth Corridor of Tanzania, Rural Water Supply and Sanitation Agency, Mbingu Sisters Spiritual Centre, Pasiansi Wildlife Training Institute, District Councils of Kilombero and Kilosa, Reforest Africa, Southern Tanzania Elephant Program



### Maasai Steppe

This landscape in northeastern Tanzania spans over 40,000 square kilometers and includes Tarangire and Lake Manyara National Parks. Since 2014, we've aided local communities and the Tanzanian government in securing an important corridor between the parks. AWF's efforts have turned Manyara Ranch into a successful livestock operation and a thriving habitat for elephants, leopards, aardvarks, and elands, providing a crucial corridor for wildebeest migration and the largest giraffe nursery in the region. This year marks a major milestone for the ranch, when the local Manyara Ranch Management Trust took over day-to-day management from AWF and secured ecotourism development investment as part of a long-term sustainability strategy for the ranch.

GBF:	1, 2, 3, 5, 8, 9, 10, 11, 12, 13, 14, 15, 16, 17, 19, 20, 21, 22, 23
SDG:	1, 3, 4, 5, 7, 12, 13, 15, 16, 17

Partners: USAID, RTI International, Manyara Ranch Management Trust, Monduli District Council, Tanzania National Parks, Tanzania Wildlife Management Authority



### Tsavo-Mkomazi

The Tsavo-Mkomazi landscape straddles the boundary between Kenya (Tsavo) and Tanzania (Mkomazi). In Mkomazi, thanks to an AWF-financed borehole, rhinos and rangers now have access to fresh water in the Mkomazi Rhino Sanctuary. Previously rhinos and rangers were dependent on park management trucking in water twice a week. Our teams continue counter wildlife trafficking efforts, including court monitoring, supporting witness attendance at court proceedings, and sensitizing people to wildlife laws. Other activities include detecting trafficked wildlife and deterring poaching.

GBF:	1, 2, 3, 5, 8, 9, 10, 11, 12, 13, 14, 15, 16, 17, 19, 20, 21, 22, 23
SDG:	1, 3, 4, 6, 7, 12, 13, 15, 16, 17
Partners:	GIZ, Judiciary of Tanzania, Tanzania National Parks, Tanzania Wildlife Management Authority



# Country & Landscape-Level Programs

## UGANDA

With a new AWF country director in place, we have refreshed AWF’s country strategy to refine areas of prioritization through 2031, with an emphasis on demonstrating the value of wildlife as a key asset for national sustainable development and encouraging strategies for human-wildlife coexistence. Counter wildlife trafficking work in the country includes canine units with wildlife authorities at the main national airport, Entebbe Airport, and in Karuma, part of the Murchison Falls landscape. The Karuma Bridge is highly strategic due to its connectivity with northern Uganda, the Democratic Republic of Congo, and South Sudan. As a major transit hub, Karuma links critical trade routes between Uganda and these neighboring regions, making it an important point for both legal and illegal cross-border activities.



### Kidepo

Located in northern Uganda and crossing into Kenya and South Sudan, the Kidepo landscape has more than 30 protected and conserved areas. In partnership with the Uganda Wildlife Authority, we are helping to establish the Kidepo Landscape Conservation Stakeholders Forum with community leaders, government and district officials, civil society organizations, and others. The forum advocates for comprehensive, adaptive, and community-centric conservation solutions for the landscape. This includes partnering with community members to rehabilitate water sources and improve water resource management to benefit the overall resiliency of the ecosystem and reduce human-wildlife conflict. Other human-wildlife conflict mitigation efforts include working with local farmers and community scouts.

GBF:	1, 2, 3, 5, 8, 9, 10, 11, 12, 13, 14, 15, 16, 17, 19, 20, 21, 22, 23
SDG:	1, 4, 6, 7, 12, 13, 15, 16, 17
Partners:	Regenerative Fund for Nature, Dynamic Agro-Pastoralist Development Organization, Fine Spinners Uganda, KKAKKA Community Wildlife Association, Uganda Wildlife Authority

### Murchison Falls

This landscape, located at the northern end of the Albertine Rift Valley, includes Uganda’s largest and oldest conservation area. Our work focuses on managing land sustainably, enhancing climate resilience, strengthening wildlife law enforcement, reducing human-wildlife conflict, and promoting conservation to youth. This year, as part of our species work to conserve giraffes and rhinos, we created space for dialogue between local communities and park authorities in managing community-based wildlife crime, limiting human-wildlife conflict, and understanding legal policies and penalties regarding wildlife crime. We are also helping rangers and community scouts better understand rhino behavior management in anticipation of a planned relocation of rhinos to Ajai Wildlife Reserve.

GBF:	1, 2, 3, 5, 8, 9, 10, 11, 12, 13, 14, 15, 16, 17, 19, 20, 21, 22, 23
SDG:	1, 4, 7, 12, 13, 15, 16, 17
Partners:	Uganda Wildlife Authority, WCS

## ZIMBABWE

At the national level, AWF is working closely with the Zimbabwean government and other partners to unlock the potential of a biodiversity economy, with the launch of the Zimbabwe Biodiversity Economy Report this year and a presentation on green financing for the environment at the Zimbabwe Economic Development Conference in October. We provide counsel for various national legislation, policies, and action plans, including the Agriculture National Strategy Action Plan and the National Biodiversity Strategy and Action Plan. In addition, we lead the protection enforcement group for Zimbabwe’s National Elephant Strategy, offering expertise to improve wildlife management.



### Mid-Zambezi Valley

The Mid-Zambezi Valley is a transboundary area straddling Zimbabwe and Zambia. We are working alongside communities to develop sustainable and participatory conservation solutions. This includes increasing people’s access to clean water, improving community health, and creating opportunities for food cultivation and beekeeping. We are also working with communities on fire management to protect wildlife habitat from wildfires and addressing human-wildlife conflict through investments in community wildlife scouts. This year, we continued to directly support Mana Pools National Park. Infrastructure investments for the park included building family bathing facilities for rangers, installing a solar water supply system, and renovating and installing a water purification system for a critical radio communications field station. We also provided rangers with field equipment to strengthen anti-poaching efforts and donated a boat to support transboundary river patrols.

GBF:	1, 2, 3, 5, 8, 9, 10, 11, 12, 13, 14, 15, 16, 17, 19, 20, 21, 22, 23
SDG:	1, 3, 4, 5, 6, 7, 12, 13, 15, 16, 17
Partners:	Swedish International Development Cooperation Agency, Danish International Development Agency, Danish Church Aid, Bushlife Africa Trust, CITES MIKE, Farmers Association of Community Self Help Investment Group, Future of Hope Foundation, Government of Zimbabwe, ZimParks





# Letter from the Chair

As I reflect on the beginning of my second year as Chair of AWF’s Board of Trustees, one word comes to mind: momentum.

The past several years have been ones of great growth for our organization. We came out of Covid-19 in a definitional way, as co-conveners with the IUCN of the Africa Protected Areas Congress. Two powerful networks we developed were unveiled there, the Africa Protected Area Directors and the African CSOs Biodiversity Alliance. Each has since proven to be highly influential in building consensus and policy action for African conservation.

Our rights-based policies are bearing fruit. We have become leaders in defining how to implement rights-based conservation on the ground and in creating dialogue and shared solutions between potential adversaries in conservation landscapes. Our work in Cameroon’s Faro landscape is an example of this—where conflict has measurably decreased between local farmers and pastoralist herders thanks to AWF-initiated teams bringing the two groups together.

Finally, our work to link conservation to economic progress has taken off with the launch of Zimbabwe’s Biodiversity Economy Report. This landmark analysis conducted by AWF, the Ministry of the Environment, and African Leadership University demonstrates

how nature’s assets, services, and products are significant drivers of the national economy. It’s a blueprint for sustainable economic development that is now being developed for other countries.

The insights we have gained into how to effectively practice conservation in Africa have been hard-won. The groundwork we have laid to make conservation a driver of growth is solid. And the pathways we have for ensuring conservation is at the table when decisions are being made are influential and diverse.

This all adds up to momentum. Momentum for AWF and for our vision of an Africa where conservation is tied to progress for people.

I am proud of our achievements this year and excited about what we will achieve in the years to come. If you are already a partner or supporter, thank you. If you are not, I invite you to join us in building a future for Africa where people and wildlife thrive.

Sincerely,

Larry Green  
*Chair, AWF Board of Trustees*

## BOARD OF TRUSTEES

Larry Green ( <i>Chair</i> )	D. Gregory B. Edwards	Catherine Herring	Shingai Mutasa
Sara Aviel	Mary Glasser	H.E. Mahamadou Issoufou	Emery Rubagenga
Myma Belo-Osagie	Stephen Golden	Stephen Juelsgaard	Anne Scott
Akhil Bhardwaj	Donald Gray	Laura Kohler	Kaddu Sebunya ( <i>CEO</i> )
Mark Burstein	Rt. Hon. Lord Chris Grayling	Andrew Malk	Craig Sholley
Payson Coleman	Marleen Groen	Charles Mbire	Fred Steiner
H.E. Hailemariam Desalegn Boshe	Heather Sturt Haaga	Veronica Meinhard	Pierre Trapanese
Brad Drummond	Gilles Harerimana	H.E. Festus Mogae	Maria Wilhelm
Lynn Dolnick	Christine Hemrick	Christopher Murray	

## COUNTRY BOARDS

Canada	Kenya	United Kingdom
Catherine Herring ( <i>Chair</i> )	Jacqueline Hinga ( <i>Chair</i> )	D. Gregory B. Edwards ( <i>Chair</i> )
Sheena Chandaria	Kaddu Sebunya ( <i>Secretary</i> )	Rt. Hon. Lord Chris Grayling
Colin Chapman	Mohanjeet Singh Brar	Marleen Groen
Mark Ponter	Judy Gona	Heather Sturt Haaga
Kaddu Sebunya	Ali Kaka	Gilles Harerimana
	Mutuma Marangu	Kaddu Sebunya
		Junko Sheehan

## TRUSTEES EMERITI

E.U. Curtis Bohlen	Victoria Leslie
Joan Donner	Henry P. McIntosh IV
Leila S. Green	Heather Sturt Haaga
John H. Heminway	David E. Thomson
Janet & William “Wilber” James	Charles R. Wall
Dennis J. Keller	
Robert King	

AWF’S TRUSTEES, COUNCIL MEMBERS, AND OUR MANY OTHER SUPPORTERS HELP TO SAFEGUARD AFRICA’S WILDLIFE AND WILD LANDS, ELIMINATE ILLEGAL WILDLIFE TRADE, AND PROMOTE AFRICAN-LED CONSERVATION IN THE SERVICE OF COMMUNITIES AND WILDLIFE. THANK YOU FOR ALL YOU DO.

THE TRUSTEES AND COUNCIL LISTS REFLECT THOSE WHO SERVED DURING THE 2024 FISCAL YEAR AS WELL AS THOSE SERVING AT THE TIME OF PUBLICATION IN FY25.



# The Value of an Unrestricted Gift

**A**WF's ability to drive conservation action is thanks largely to the generosity of our donors and supporters worldwide. While the definition of success does not change—leading for, living with, and caring for wildlife—circumstances on the ground in Africa can change quite rapidly.

Unrestricted donors recognize this and trust us to focus their funds on the most targeted and appropriate strategies to achieve our vision. That trust allows AWF to remain nimble in responding to new opportunities and pivot our approaches based on realities in the field.

Because unrestricted donations are provided without limitations, AWF has the flexibility to use them in various ways.

For example, over the past several years unrestricted funds have seeded our global leadership initiatives to influence development decisions that benefit both people and wildlife. This year, unrestricted funds supported landscapes in Cameroon and the Democratic Republic of the Congo as we negotiated for European Union funding. Likewise, the transition of Tanzania's Manyara Ranch to local community management would not have been possible without unrestricted support.

Unrestricted funds also go toward crucial operational costs, such as rigorous annual audits to ensure financial accountability in all the places where we work, and toward meeting unplanned needs, such as medical emergencies in the field. During the Covid-19 pandemic, we used unrestricted funding to support vulnerable communities and wildlife authorities when other organizations pulled out.

Unrestricted funding is an essential component of our financial durability, making up more than 55% of donations. We are deeply grateful to unrestricted donors' unyielding belief in our teams' experience on the front lines of conservation and their confidence that we will use their funding wisely to unlock our best solutions for wildlife in Africa.



**TANZANIA:** ELEPHANTS ROAM THROUGH MANYARA RANCH, PART OF A WILDLIFE CORRIDOR IN NORTHERN TANZANIA BETWEEN NGORONGORO CONSERVATION AREA AND TARANGIRE NATIONAL PARK. UNRESTRICTED FUNDS HAVE BEEN ESSENTIAL IN ENABLING AWF TO RESTORE THE ONCE DEGRADED CATTLE RANCH INTO A THRIVING MULTI-USE COMMUNITY-LED CONSERVANCY. © AWF/ARIEL GAKUNGA



# PARTNERS

DRC: ORPHAN BABY BONOBO WITH SURROGATE HUMAN MOTHER AT LOLA YA BONOBO SANCTUARY NEAR KINSHASA. BONOBOs ARE ENDANGERED AND ENDEMIC ONLY TO THE DRC. AWF MONITORS BONOBO POPULATIONS IN THE MARINGA-LOPORI-WAMBA LANDSCAPE IN THE DRC. © MARTIN HARVEY.



PUBLIC SECTOR & INTERNATIONAL PARTNERS



EUROPEAN UNION



german cooperation  
DEUTSCHE ZUSAMMENARBEIT



KfW



Federal Ministry  
for the Environment, Nature Conservation,  
Nuclear Safety and Consumer Protection



MILLENNIUM  
CHALLENGE CORPORATION  
UNITED STATES OF AMERICA



UNESCO  
United Nations  
Educational, Scientific and  
Cultural Organization



UN  
environment  
United Nations  
Environment Programme



INTERNATIONAL NARCOTICS & LAW ENFORCEMENT  
UNITED STATES DEPARTMENT OF STATE  
JUSTICE & SECURITY



Sida

Beijing Zoo

Convention on International Trade in Endangered Species of Wildlife Fauna and Flora, Monitoring the Illegal Killing of Elephants (CITES-MIKE)

Danish Church Aid

Danish International Development Agency

Deutsche Gesellschaft für Internationale Zusammenarbeit (GIZ) GmbH

European Union (EU)

Expertise France

French Biodiversity Agency

German Federal Ministry for the Environment, Nature Conservation, Nuclear Safety and Consumer Protection (BMUV)

Global Environment Facility (GEF)

Government of Japan

KfW Group

Post-2020 Biodiversity Framework - EU Support

Stichting Nederlandse Vrijwilligers (SNV)

Swedish International Development Cooperation Agency (Sida)

United Nations Convention on Biological Diversity (CBD)

United Nations Development Program (UNDP)

United Nations Educational, Scientific & Cultural Organization (UNESCO)

United Nations Environment Program (UNEP)

United States Agency for International Development (USAID)

US State Department Bureau of International Narcotics and Law Enforcement (INL)

United States Fish and Wildlife Service (USFWS)

World Bank Group

STRATEGIC & IMPLEMENTING PARTNERS

51Degrees Ltd.	District of Musanze (Rwanda)	Mbingu Sisters Spiritual Centre	Vanguard Economics
Action Aid	Diwadane Farmers Cooperative	Ministry of Environment (Rwanda)	Village Enterprise
African Civil Society Biodiversity Alliance (ACBA)	Downforce Technologies	Ministry of Environment, Climate and Wildlife (Zimbabwe)	Water Resource Authority (Kenya)
African Development Bank	Dynamic Agro-Pastoralist Development Organization	Ministry of Environment and Climate Change (Sierra Leone)	Wildlife Clubs of Kenya
African Group of Negotiators on Biodiversity	Eco Excellency	MOCK Technologies	Wildlife Conservation Society (WCS)
African Leadership University School of Wildlife Conservation	Ecoplanet Bamboo	National Administration for Conservation Areas (Mozambique)	World Wide Fund for Nature (WWF) Africa
Africa Protected Areas Congress	EcoTransferts	National Land Use Planning Commission	World Wide Fund for Nature (WWF) Cameroon
African Protected Area Directors (APAD)	Elephant Cooperation	Nature, Environment, and Wildlife Filmmakers (NEWF)	Zimbabwe Environmental Law Association
African Union Commission	Environment Foundation for Africa	Nature Rwanda	Zimbabwe National Parks and Wildlife Management Authority (ZimParks)
Alliance for Indigenous Peoples and Local Communities for Conservation in Africa	Esri	Noe	
APIFED	Ethiopian Wildlife Conservation Authority (EWCA)	Okavango Capital	
Associazione Mazingira	Fine Spinners Uganda	Olam Food Ingredients	
BIOFUND	Fondation pour l'Environnement et le Développement au Cameroun	Parc Agroindustrial Dingila	
Bityarn Consult	Global Environmental Institute	Pasiansi Wildlife Training Institute	
Boma	Global Youth Biodiversity Network, Africa chapter	Peace Parks Foundation (Mozambique)	
Bushlife Africa Trust	High Ambition Coalition for People and Nature	People's Trust for Endangered Species	
Cameroon Ministry of Forestry and Wildlife (MINFOF)	Holland Greentech (Rwanda)	Regenerative Fund for Nature	
Campaign for Nature	ILUMA Wildlife Management Area	Reforest Africa	
Catholic Youth Network for Environmental Sustainability in Africa	Indigenous Livelihood Enhancement Partners	RTI International	
Center for International Forestry and World Agroforestry	Inkomoko	Rwanda Development Board (RDB)	
Centre de Surveillance de la Biodiversité de l'Université de Kisangani	Institut Congolais pour la Conservation de la Nature (ICCN)	Rufiji Basin Water Board (Tanzania)	
Classroom Africa School Partners	International Conservation Caucus Foundation (ICCF)	Rural Water Supply and Sanitation Agency (Tanzania)	
Adsigi Primary School	International Fund for Animal Welfare (IFAW)	SABYINYO Community Association (Rwanda)	
Ilima Primary School	International Union for Conservation of Nature (IUCN)	Self Help Investment Group (Zimbabwe)	
Kidepo Primary School	Judiciary of Tanzania	Southern Agricultural Growth Corridor of Tanzania (SAGCOT)	
Manyara Ranch Primary School	Juristes pour l'Environnement au Congo (JUREC)	Southern Tanzania Elephant Program	
College of African Wildlife Management (Mweka)	Kenya Wildlife Service (KWS)	Taita Hills Wildlife Sanctuary	
Community CAMPFIRE Association (Zimbabwe)	Kilombero Community Charitable Trust	Taita Taveta Wildlife Conservancies Association	
Conservation Heritage Turambe (Rwanda)	Kilombero Organization for Community Development	Tanzania Agricultural Research Institute	
Conservation Strategy Fund	Kilombero Sugar Company	Tanzania Electrical Supply Company	
Conserve Global	KKAKKA Community Wildlife Association	Tanzania Forest Services Agency	
Cottar Group	Land Development and Governance Institute	Tanzania National Parks Authority (TANAPA)	
County Government of Taita Taveta (Kenya)	Manyara Ranch Management Trust (Tanzania)	Tanzania Wildlife Management Authority (TAWA)	
Danish Church Aid	Mass Design Group	Telcar	
Department of Wildlife and National Parks (Botswana)	Mazingira ni Uhai Foundation	Uganda Wildlife Authority (UGA)	
District Councils of Kilombero and Kilosa (Tanzania)		UK Partnering for Accelerated Climate Transitions	
District Council of Monduli (Tanzania)		University of Rwanda	



CORPORATE & FOUNDATION PARTNERS



AbbVie Inc. Employee Giving Campaign	Elephant Cooperation	Regenerative Fund for Nature
American Association of Zoo Keepers - Memphis Chapter	Elephant Gin	Shell Oil Company Foundation Matching Gifts
America’s Charities	FEDEC	Simply Southern
Arcus Foundation	Fondation Segré	Sir Edmond Gin
Arvid Nordquist HAB	Franklin Philanthropic Foundation	Taronga Zoo
Bank Of America Employee Giving Campaign	GAMOMAT	The Columbus Foundation
Benevity Social Ventures, Inc.	Gift Aid	The Explorations Company
Better Planet Fund	Give Lively	The Friendship Fund
Bloomberg Philanthropies	Head and Heart Foundation	The Helvellyn Foundation
Blue Pacific Flavors	Johnson & Johnson Family of Companies	The Hulitar Family Foundation
BNY Mellon Community Partnership	Kaiser Permanente Community Giving Campaign	The Kors Le Pere Foundation
Boeing	McKesson Foundation	The Perkins Charitable Foundation
Bridget Rose Foundation	Medtronic Foundation Volunteer Grant Program	The West Foundation
Bright Funds	Nancy-Carroll Draper Charitable Foundation	The Wildflower Foundation, Inc.
Capital Group	Nature’s Path Foods	The William H. & Mattie Wattis Harris Foundation
Cboe Global Markets	Network For Good	TisBest Charity Gift Cards
Chevron Corporation	Panaphil Foundation	Tito’s Vodka For Dog People
Cleveland Metroparks Zoo	PayPal Giving Fund UK	Topdrawer
Climate Ride	PeaceNexus Foundation	TUI Care Foundation
D.N. Batten Foundation	Peter Gilgan Foundation	United Way of King County
Donner Canadian Foundation	People’s Trust for Endangered Species	US Bank Foundation
Earth Share	Q36.5	

\$100,000 & Above

Anonymous (4)	Stephen Golden & Susan Tarrence	Robert E. & Emily H. King	Simply Southern
Arcus Foundation	The Gordon & Patricia Gray Animal Welfare Foundation	Laura Kohler & Steve Proudman	The Spurlino Foundation
Bright Horizon Fund	Mr. & Mrs. Larry Green	Julie Konigsberg	Straus Family Foundation
The Brunckhorst Foundations	Natasha Grigg	Mr. Daniel Maltz	David & Karie Thomson
John & Rita Canning	Head & Heart Foundation	Claudia Miller	TUI Care Foundation
Payson & Kim Coleman	Ms. Christine F. Hemrick	Nancy-Carroll Draper Charitable Foundation	Nancy & Charles Wall Family Foundation Fund
D.N. Batten Foundation	The Helvellyn Foundation	Panaphil Foundation	
Elephant Cooperation	Dr. Stephen G. Juelsgaard	M. Piuze Foundation	
Elephant Crisis Fund	Dennis & Connie Keller	Regenerative Fund for Nature	
Fondation Segré			

\$50,000 to \$99,999

Ms. Brenda K. Ashworth & Mr. Donald Welch	Mark Burstein & David Calle	Peter Gilgan Foundation	Wiancko Family Donor Advised Fund of the Community Foundation of Jackson Hole
Benevity Social Ventures, Inc.	Lynn & Edward Dolnick	Mary Glasser	
Candice Bergen	FEDEC	The Helvellyn Foundation	The Wildflower Foundation, Inc.
Akhil Bhardwaj	Larry & Stephanie Flinn	Mr. & Mrs. Peter Stewart	

\$25,000 to \$49,999

Anonymous (4)	GAMOMAT Distribution GmbH	Itoya Topdrawer Corp.	Geoff Tennican & Jennifer Durning
Mrs. Patricia Blumberg	Susan Garcia	Justine Johnson & Gary Block	Trapanese Family
Bright Funds	Mrs. Maggie Georgiadis	Kim Kanas	Joyce M. Turk
Capital Group	Claire Gerichten	Ms. Karen Mitchell	Mr. Robert Zoellick & Mrs. Sherry L. Ferguson
Mr. & Mrs. David Chase	Give Lively	Christopher & Danielle Murray	
Earth Share	Michael & Anne B. Golden	Mr. Austin F. Okie	
The Joseph & Marie Field Family Environmental Foundation	Ms. Marleen Groen	PeaceNexus Foundation	
Ms. Jane E. Flynn	Gilles Harerimana & Sara Nso	Mari Sinton-Martinez & Paul Martinez	
Mr. Christopher B. Galvin & Mrs. Cynthia B. Galvin	Heather Byrne & Ron Helmecı	Frederick & Mary Beth Steiner	
	Catherine Herring	David & Ali Tejtel	

\$10,000 to \$24,999

Anonymous (5)	Bridget Rose Foundation, Inc.	Robert G. Donnelley	Doug & Shoshana Himmel
Arvid Nordquist HAB	Mrs. Randolph Brown	Donner Canadian Foundation	The Tim & Karen Hixon Foundation
Kym Aughtry	Burns & Kindle Families	Robert & Carol Dorsey	Mrs. Rebecca Horowitz
Jared Bartok	Ann Cannarella	Malini Dufton	Mr. & Mrs. Michael Horvitz
SEB Charitable Fund	Daniel & Margaret Carper Foundation	Mr. Gregory B. Edwards	Kimberly M. Hughes
Better Planet Fund	Julie A. Clayman	John & Nancy Edwards Family Foundation	Hulston Family Foundation
Jay & Savita Bharadwa	Cleveland Metroparks Zoo	The Explorations Company	Dr. Raye C. Hurwitz M.D.
JBCM Foundation	The Columbus Foundation	Candace & Bert Forbes	Ina Kay Foundation
Mark & Deborah Blackman	Joyce & Robert Daniels	Ms. Jane G. Fouser	Irving Jacobson
Blank Family Foundation	Mrs. Stuart Davidson	John & Lesley Gilbert	William & Janet James
Bloomberg Philanthropies	Leslie Devereaux	The Grey Family	Erika Pearsall & Ned Jannotta Jr.
Tom & Renee Boldt	The Dixit Family Gift Fund, a Donor Advised Fund of Renaissance Charitable Foundation	Mr. & Mrs. Edward Harris	Honorable Kristina M. Johnson Ph.D.
Mr. McLean Bowman		Mr. Craig S. Harrison	Hugh & Wendy Kendrick
Tracy Boyer	Marcia Donley	Mallory Hathaway	Dr. Douglas Koch



Joel Kremer	The Overall Family Foundation	Sandra Pitts Seidenfeld	Elaine Berol Taylor & Scott Brevent Taylor Foundation
Robert Longo	Scott & Marline Pallais, Adonai Foundation Fund at The San Diego Foundation	Mr. Morris Shafter	Thornton Family Foundations
Mr. John W. Madigan		AJ Shankar & Bekah Sexton	Tito's Handmade Vodka
Andrew Malk	Martha M. & Robert N. Parke	Ms. Donna B. Shaver & Mr. Preston Seu	Ms. Valerie Van Griethuysen
Barbara Malk	PayPal Giving Fund	Spencer L. Murfey Jr. Family Foundation Inc	Ms. Marcia Wade & Mr. John Officer
Kathleen L. McCarthy	The People's Trust for Endangered Species		
Scott T. McGraw	Ms. Anna K. Rentz	Dorothy Spindle	Glenna Waterman
Fan & Peter Morris	Melinda Richmond	Robert Stephen	The West Foundation
Sandra J. Moss	Henry M. Rines	Steven Straus	Ms. Regina B. Wiedenski
Nature's Path Foods	Laurie Robinson & Sheldon Krantz	Susan Stribling	Jack Wilkenfeld M.D.
Loi & Adele Nguyen	Ron Rosano	Alice Sturm	Mrs. April Wilson
Noah & Annette Osnos	Mrs. Mary E. Schroeder	Pamela Tate	

\$5,000 to \$9,999

Anonymous (4)	Marcia Docter	David & Cassandra Knowles	Mr. & Mrs. David Roby
Eric & Marisa Affeldt	Ms. Laura Eanes	The Kors Le Pere Foundation	Ronus Foundation
Linda R. Andrews	Elephant Gin	Jonathen Kwok	David Ryan
Kimberly & Tylor Armstrong	Zubin Emsley	Peter & Deborah Lamm	Nimish & Niti Sanghrajka
Aspen Business Center Foundation	Ms. Heather A. Evans	Ms. Ann Landes	Mr. Matthew Schaab
Barbara Babcock	Figueirinhas Family	The Thomas & Carolyn Langfitt Family Foundation	Mary Schemenauer
Mr. Richard Bamberger	Ms. Lauri Franks	Nancy Latner	Ms. Katherine W. Schoonover
Louise Beale	Rick & Joyce Gallagher	Pamela Lichty	Martha J. Schultz
Big A LLC	The Edward & Verna Gerbic Family Foundation	Lisa E. Duke Foundation	Trish Scott
Michael Binns			Susan H. Shane
John & Dorrie Bitzer	Gordon S. Gibson	Richard & Fran Little	Mr. & Mrs. Raymond Shea
Blue Pacific Flavors	Gift Aid	Luebbert Family Charitable Fund of the New Hampshire Charitable Foundation	Jane & Marshall Sheldon
Linda Bottarini & Leroy Elkin	Adah Ginn	Ms. Diane H. Mabbitt	Ms. Nancy B. Sherertz
Samuel Schneider Foundation	Anne & Ken Golden	The Magnolia Fund	Mrs. Ellin A. Simmons
Mr. & Mrs. Mark Brodsky	Mr. Frank C. Graves & Mrs. Christine Dugan	Susan & Frank Mars	Mr. Lawrence R. Smith & Ms. Glenda H. Fitzpatrick
Michael K. & Waltraud Buckland	Ms. Leila S. Green	D. Anne Martin	The Charles Spear Charitable Trust
Dan & Robin Catlin	Marjorie & Timothy Griffith	Laurence Meadows	Gerald I. H. Street Esq.
Mr. Rich Chambers & Ms. Bonnie McGregor	Beth Guillaumin	Mickles Elephant Foundation	Sheila C. Swigert
Chandaria Family	Heather Sturt Haaga & Paul G. Haaga, Jr.	Jonathan Mintzer	Taronga Zoo
Ms. Lynn Chiapella	Ms. Kimberly Hallatt	Mr. & Mrs. Jay Mutschler	Mrs. Margaretta J. Taylor
Dr. & Mrs. Donald Clark	The Harcourt Foundation	Peter & Eleanor Nalle	TisBest Charity Gift Cards
Mrs. Jan Clark & Mr. Jack Clark	Susan M. Harding	Mr. James Nystrom	Ms. Victoria S. Trauscht
Herlehy Claybaugh Love Fund	Mr. John & Mrs. Melanie Harkness	Ms. Lida Orzeck	Rita Vallet
Ms. Bonnie Clendenning	Dr. & Mrs. Willie L. Hinze Jr.	Paulson Charitable Foundation	Mr. Nicholas Van Der Ploeg
Mrs. Linda Clevering	Howard E. Jessen Family	Dr. Patti McGill Peterson & Dr. Kate S. Woodward	Margot Vandernoot
Climate Ride	The Hulitar Family Foundation	Anthony Phillips	Thomas Ward
Mr. Dion F. Coakley	Hyde Family Foundation	Duane Siders & Deborah Phillips	Diana J. Washburn
Barbara Cocovinis	The Jackson Family	John & Nuri Pierce	Jo Anne Wiley
Minette Corpuz	Nancy Josephs	Q36.5	Mireille Wilkinson
The Cosman Family Foundation	Katharine K. McLane & Henry R. McLane Charitable Trust	Mr. & Mrs. Gerald M Quiat	Marylyn Wouda
Stephen Crozier	Dr. Carol A. Kauffman	Mark & Karen Reed	Anita Yagjian
Mr. & Mrs. Donald Daniels	Mr. & Mrs. John C. Kennedy	Ida Katherine Rigby, Ph.D.	Amy Zacheis
Susan Delmanowski	Ms. Ellen Knell	Ms. Diane Robins	
Roopa Dhatt			

\$1,000 to \$4,999

Anonymous (26)	Mr. Gary Baxel	Erik Brauner	Ms. Kathryn H. Chezik
Margaret Abbott	Elizabeth Beamon	Mary & Chip Brennan	Chisholm Chisholm & Kilpatrick LTD
AbbVie Inc. Employee Giving Campaign	Susan Beattie	Debra Briozza	Bonnie Chouinard
Mr. Benjamin A. Abel	Ms. Jane K. Becker	David & Connie Brockway	Ms. Alice S. Church & Ms. Debra A. Hodson
Suzanne Abel	Mr. Richard Bednarski	Mr. & Mrs. Julian A. Brodsky	Ms. Suzanne Church
Susan Abrams	Kasey Beltz	Christopher M. Brown	Mr. Kelly Clark
Sheryl L. Adams	Joyce Benenson	Paul Brown	Mr. & Mrs. David L. Cobb
Darley Adare	Mrs. Robin I. Bennett	Ms. Rebecca Brown	Michael Cobler
Mrs. Marilyn Ade	Bruce Berg	William Bruck	Ms. Donna Cocke
Edwin & Jean Aiken	Mrs. Lynn Berger	Thomasine & Bruce Brumbaugh	Barbara J. Cohen
Alex Albright	Mr. Robin Berkeley, OBE	Douglas Bue	Mr. Hayyim Cohen
Harvey & Donna Allen	Dr. & Mrs. Jordan D. Berlin M.D.	Ms. Lucy Bugea	Ms. Faith Coleman
Gregory Allgrim & Diogenes Cruz	Barbara A. Berman	Ms. Elizabeth Burdick	Thomas R. Coleman
Ms. Amy Alpine	Jack Bernauer	Mr. Christopher R. Burns	Ms. Annette E. Colfax
David & Sharman Altshuler	Elizabeth Berrien	Gillian Burt	Jay A. Conger
Amberlite Options Group, LLC	Max L. Bessler	Sharon L. Butcher	Joseph & Norma Cook
America's Charities	Ms. Josephine Bettinger	Jon Butera	Kim Cook
Ms. Faye C. Anderson	Betty A. Lewis University Environmental Charitable Trust	Mr. & Mrs. Ron Butler	Ms. R. G. Cooks
Mr. & Ms. John Anderson	Dhiraj & Agni Bhatt	Mr. David J. Butts	Mr. Ian Cooper, Dog Behaviourist
Mr. Samuel N. & Mrs. Patricia M. Anderson	Kenneth & Maria Binder	Sharon Cabeen	Susan E. Cooper
Ms. Ruth Anderson	Matthew & Barbara Black	Ms. Kathryn E. Cade	Paula Corcoran
Mr. Charles Andrews	Susan Blair	Mr. & Mrs. Gerald Cahill	Carla R. Corwin
Phyllis Anzalone & Jefferson B. Johnson	Helen Blanchard	Patricia Calvo	Susan Cottle
Mrs. Linda E. Arbaugh	Tad & Kathy Blank	Susan Canmann	Britta Couris
Susan Arias	Don & Marcia Blenko	Dr. Irene Cannon-Geary	Mr. Robert Cox
Mrs. Kathryn Arnold	Margaret S. & Philip D. Block, Jr. Family Fund	Dr. Allan V. Carb	Gordon & Jacqui Cragg
Camille Arthur	Cheryl Blodgett	Laura Carbone & Mitchell Watsky	Karen Crandall
Stephanie Artis	Mr. Ronald T. Bloomstran	Dr. Elizabeth P. Carey	Peter & Sharon Crary
Steven Ashelin	Dr. Nancy Blum & Mr. David Potel	Alison Carlson	Winston Crawford
James & Helen Ashford	BNY Mellon Community Partnership	Ms. Peggy Carnahan	William Cree
Carolyn Ashlock	Jerry Bobo	Ms. Angela Carnegie	Donald Cronin
Martha Athanas	Ms. Judith A. Bocock	Ms. Leslie Carothers	Culver
Robert Atkinson	Mr. & Mrs. David Boechler	Ms. Dorinda Carr	Mr. Mark S. Cunningham & Dr. Judith Klein
Thaddeus S. Austin	Boeing	Ms. Gloria J. Carr	Dr. Michael H. Cynamon
Ms. Florence Avakian	Peter R. Boerma	Elizabeth Case	John Dahm
Ms. Sharon E. Bachmann	Dr. Gabrielle Bolton	Lawrence Casey	Mr. & Mrs. Larry Dale
Barbara Bailey	Holly Boone	Tom & Gayle Casselman	Ms. Gail B. Dallmann-Swenson
Sandra Bailey	Carol Boram-Hays	The Cassum Family Foundation	Dianne C. Dana
Nancy Balto	John & Sandra Bordi	Zulette M. Catir	Elizabeth Jones Darley
Armine Banfield	David Borsook	John E. Cay III	Susan & Bill Darnell
Bank Of America Employee Giving Campaign	Ms. Rema Boscov	Richard Cayne	Ms. Karen Davidson
Ms. Linda M. Barker	Mr. & Mrs. Larry C. Bradford	Cboe Global Markets	Susan Davidson
Mr. David Barnhart	Ms. Miriam Brafman	Theresa Cederholm	Mr. Jefferson Davis
Ms. Elizabeth Barron	Ms. Elaine Branagh	Jenny Chan	Ms. Laurie B. Davis & Mr. Joseph M. Sellers
Nancy Barsotti	J. Read Jr. & Janet Dennis Branch Fund of the Community Foundation Serving Richmond & Central Virginia	Mr. Dennis C. Chang	Susan Davis
Mr. & Mrs. Nasser Basir	Sue Brandt	Renee L. Chastant	Frank & Joan Dawson
Bret Batchelor	Ms. Susan E. Brandt	Janet Chayes	Mrs. & Mr. June Dawson
Mr. & Mrs. Michael J. Bauer		Charles Chester	Dania de la Vega
Jeffry W. Baum		Chevron Corporation	John & Catherine de Strakosch



Mr. Pierre De Villiers	Ms. Nicole Engdahl	Dr. Bruce Gelvin & Mrs. Diane Gelvin	Mr. Crispin Hales	Virginia Hughes	Laura Kether	Pamela Laurie	Manganiello Family Fund
John Deakin	Mr. & Mrs. Richard Evrard	Mr. Markus H. Gemuend & Mrs. Christine E. Gemuend	Mr. Gustavus W. Hall	Roger Huntsman	Ms. Virginia Kibre	The Laursen Family	Edward & Elizabeth Mansfield
Mrs. Elizabeth Dean & Mr. Richard J. Wilcox	Linda Facer	Mr. Robert Geneczko	Missy Hall	Susan F. Hurrell CPA	Lucy Y. Steinitz	Ms. Leslie Laux	Mario & Christine Marchi
Mrs. Mary Dearborn	Alan Faiers	Stephen George	Bob Hallahan	Patt & Rick Hustead	Dusty Kiernan	Mr. Bruce Lawson	Mrs. Joyce & Mr. Scott Marhoefer
Laurie E. Dearlove	Mrs. Pamela Fair & Mr. Glen J. Sullivan	Ms. Ellen W. Gerber	Ms. Kathryn Haller	Ann Hutton	Ms. Leila Kight	Jessica Leão	Edward J. Markushewski
Mr. Neil Deboer	John P. & Margaret Falk	Mrs. Virginia Germann	The Halsey Family Foundation	The Ilcisin-DAF Fund	Charice L. King	Dylan Lee & Leslee York	Janet Marler
Dr. & Mrs. George J. Dechet M.D.	Arlene Falke	Susan Gerngross	Mrs. Nina Hamilton	PC Imle	Patti & Thomas King	Mr. Tom Lee & Mrs. Elizabeth P. Lovtang	Mr. & Mrs. Robert P. Marshall Jr.
Ms. Margo Deckard & Mr. Charles Miller	Mr. Paul H. Falon & Ms. Caroline A. Mitchell	Mr. Gordon Getty	Mr. & Mrs. Michael Hamm	Mr. Gaylord Ingersoll	Jeffrey S. Kiser	Mr. Robert Legnini	Ms. Jeanne Martin
Yvonne L. Deckard	Mr. Robert Fanini	Mr. David R. Gildea & Mrs. Joyce L. Gildea	Mr. Glenn Hammons	Ellen R. Jacobson	Ms. Wendy Kitzmann	Ms. Zheindl Lehner	Mr. & Mrs. Redge A. Martin
Steven Decker	Liz Fanning	Dane Gillette	Kevin Hannon	Ms. Lauren Jacoby	Mr. & Mrs. Matthew J. Klaben	Ms. Kristin A. Lein	Ronald, Carol, & Dana Martin
Ms. Doris DeMarbieax	Dr. William Farber DVM	Mr. James Gilligan	Peter M. Hansen	Jo K. Jagoda	Joan Klein	Lennox Foundation	Kathleen & Steve Martinek
Mr. Thomas Dempsey	Frances N. & Kitty Fassett	Katie Gillis	Mr. Thor Hanson	Mrs. Myrna Jakobowski	Dr. Elise Kline	Nina Gail Levitt	Mr. John Martinez
Terry Denaria	Ms. Elaine Felde	James Gilmore	David W. Harder	Ms. Kate R. Jamison	Dr. Judith P. Klinman Ph.D.	Dr. Roger Lewin	James Matarazzo Jr
Gloria Deske	Joseph Ferraccio	Roy C. Gilmore & David Crocker	Doug Hargrave	Manonitha Jayaweera	Ann & Bennie Kniffen	Erika Lewis	Ms. Julianne Maurseth
Carolyn Deuel	George Ferris	Jane Gizzi	JoAnn & Alan Harley	Robert Jefferson	Roderic Knight	Fanny Liao	Buch McAdoo
Mr. Hal Schneider & Ms. Irene Devine	Mr. & Mrs. James R. Ferwerda M.D.	Ms. Susan M. Glasbrenner	Robert F. Harris	Barbara L. Jennings	Ms. Sarah C. Knowles	Roy Liao	Dorothy McCagg
Isabella Devine	David Fiedler	Joyce A. Godwin	Mr. Neal Hart	Mr. Jeffrey Jens	Van Knox	Dr. Abbie B. Liel Ph.D.	Mrs. & Mr. Sharon E. McCullough
Enid Diamante	Lisa S. Firestone Foundation Fund	Andrew Gold	Roger D. Hartwell	Mr. & Mrs. Thomas I. Jensen	Julia Knox-Hudson	Mrs. Laurie G. Lindner	Ms. Beverlee McGrath
Dr. Larry J. Diamond Ph.D.	Ronnie S. Fischer & Charley P. Sweet	Claire Goldstein	Marina Hassanali	Joan Shafran & Rob Haimes Foundation	Christopher Koch	Mr. & Mrs. John Lindvall	Ms. Louise McGregor
Angela Dibrell	Ms. Colleen Fitzpatrick	Ms. Suzanne V. Golt	Ms. Wendy Hatfield	Ms. Judy L. Johanson	Mr. Craig J. Koch	Ms. Patricia A. Lintala	Stevenson McIlvaine & Penelope Breese
Mr. Mark A. & Mrs. Katharine B. Dickson	The Stuart S. Flamberg Foundation	Ms. Lucille Gonyea	Mrs. & Mr. Kimiko Hattori Baum	Johnson & Johnson Family of Companies	Rosalie Koenig	Deborah Lipman	McKesson Foundation
Ms. Colleen Dinter	Dr. David Flatt & Mrs. Nancy C. Flatt	Manny Gonzalez	Ms. Janice Hayles	Mrs. Sylvia V. Johnson	Peter Kogan	Eva Lizer	Tony McKinnis
Barbara Divver & Theodore Reff	Jeffrey & Robin Fleck	Jesse Goodman	Mr. Richard P. & Mrs. Gail H. Hecmanczuk	Thad Johnson	Ms. Victoria Kohler	Holly Lloyd	Duncan F. McLaughen
Ms. Sue Dobie	Kari Floren	Ms. Lynn Goodman	Ms. June E. Heilman	Carol Johnston	Shari Kohne	Mr. Lee Lockwood	Bruce & Eleanor McLearn
Ms. Tamela Donnelly	Mr. Peter Ford	Ms. Lisa Goodrich	Ms. Jody Hellman	Colonel Freeman E. & Mrs. Anne B. Jones	Gerald A. & Karen A. Kolschowsky Foundation, Inc.	Susan Loehrl	Nancy McNamara
Mr. & Mrs. Gerry Doubleday	Ms. Shirley Foreman	Ms. Karen Gordon	Ms. Diane Henry	Laren & Randal Jones	Ms. Madelon Kominic	Mrs. William H. Loos	Medtronic Foundation Volunteer Grant Program
Ann W Douden	Betsy Forrest	Barry Gouge	Mr. & Mrs. Gaylord G. Henry	James Jones	Mr. Richard P. Kraft	Mr. & Mrs. Peter B. Loring	Debra & Lee Medwick
Deb Dowling	Kyle Foscatto	Katherine Gould-Martin	Stephen Henry	Susan G. Jorgensen	Judith Kramer	Mr. Jonathan B. Losos Ph.D.	Mr. Gilbert Meehan
Ms. Kathleen Doyle	Dawn Fournier	Ms. Reylna Graber	Ms. Rita Herman	Ms. Jennifer Josephy	Mr. C. S. Kriegh & Dr. Pamela S. Gronemeyer	Nancy Low	Melling Family Foundation
Carol Drake & John Drake	Lisa Fox	Linda D. Graham	Theresa Herman	Mr. Fernando Juarez	Patrick Kriser	Penelope Lowe	Susan Mellman
Mrs. Katherine F. Drew & Mr. Howard D. Drew	Patrick Frame & Sheila Norman	Mrs. Victoria Granade & Mr. James Granade	Mr. Ken A. Heroy	Hazel & Julian Judelman	Mr. Frank Kroger	LS Gifting	Dr. Richard Melsheimer & Ms. Cynthia L. Kring
Richard Duesbury	Harriette M. Frank	Mr. Warren Grant	Dr. Barbara Hershey	Deo Juie	Timothy Kromer & Celinde Strohl	Ms. Jolene Lu	Janis & Alan Menken
Mr. Brian T. Duffy	Franklin Philanthropic Foundation	Doug & Abbey Grawe	Mr. & Mrs. Selwyn M. Hersowitz	Justgiving	Olivia Krotts	Dan & Christine Ludlow	Dr. R. M. Mésavage
Glenda Dugan	Fred & Maxi Bruhns Foundation Inc	Lord Grayling	Mary Anne Hertel	Mr. Steven Kadish	Sandra Kunsberg	Ms. Sandra K. Lukas	Dick Metz, Project for Good Fund
Mary Duncan	Ms. Sunny F. Friedman	Allyne D. Greco	Alexander & Ella Herz	Kaiser Permanente Community Giving Campaign	Pamela Kushner MD	Mr. & Mrs. Douglas S. Luke	Mr. & Mrs. George W. Meyer
Phillip Dunkelberger	The Friendship Fund	Kathy C. Green	Mr. & Mrs. Peter N. Heydon	Neha Kale	Robert Kvaas	Mr. & Mrs. David Lukens	Dominique Milbank
Ms. Helen M. Dunlap	Lynn & Barry Friesen	Ms. Marguerite Greenman	Susan Hillenbrand	Ian & Vanessa Kallmeyer	Mr. & Mrs. Rob Labicane	Mrs. & Mr. Claire Lupton	Ms. Sharon K. Miles
Mr. Raymond E. Durkee	Dr. Andrew Frost & Mrs. Diana Frost	John Grillo	Cindy Hintz	Ms. Ona M. Karasa	Ms. Leanne Lachman	Mr. Eric Lutkin	Ms. Ellen & Clay Miller
Ms. Chizuko Dutta	Ms. Bonnie Frownfelter & Ms. Sara Metzler	Mrs. Nancy K. Grosfeld	Robert Hirsch	Harriet A. Karkut	Penny L. Lacy	Jesper Lyckeus	Ms. Janice A. Miller & Mr. Tom Belden
Dennis J. Eakin	Mr. Terry Fulwiler	Ms. L. Gayle Gross & Mr. Howard Gross	Ms. Carol Hoeffcker	Emily Karstetter	Mr. Marcos C. Ladeira	Ms. Janet Lynch	Jennifer Miller
Terry Eastman	Ms. Sandra Gallagher	Mr. & Mrs. Peter A. Grove	Drs. Bill & Nicole Hoffmeyer	Dr. Cathy Kaufman Iger	Ms. Pennie Laird	Nancy Lynn	Robert Miller
Joyce Eckman	Akhila Ganapathy	Tim & Devon Guard	Ms. Erica Hollander	Mr. Christopher Kaufman & Ms. Carlyn Clement	Caitlin Lamb	Timothy Lyons	Ms. Victoria Miller
Jo Ann Eder	Balvant K. Ganatra	Ms. Geralyn Gulseth	Ms. Valerie F. Holmes	Steven & Migette Kaup	Ms. Diane H. Lamb	Susanne Madden & Dr. Thomas Webb	Ms. Valerie C. Mills
Mr. George O. & Ms. Kathleen D. Edwards	Mr. Jon & Mrs. Phyllis Gardner	Barbara Gural	Hope for all Creatures Fund	Ms. Patricia A. Kaupp	Dr. Paul Lampert	Mr. Darren J. Magda	Mr. Lyle S. Mindlin
Anne Ehrlich	Raj Garg	Mr. Michael Guttag	Marsha G. & Thomas Hopkins	Steven Kazan & Judy Heymann Kazan	Mr. & Mrs. Gary D. Landers	Mr. & Mrs. James D. Mair	Anvita Mishra
Pattie D. Eliason	Terri & Larry Garnick	Philip Guymont	Ms. Mandana Hormozi	Ms. Kathleen Kemper & Mr. Gary B. Smith	Ms. Patrica C. Lange	Ruth Maki	Travis Mlakar
The Philip Lee Ellis & Elizabeth B. Ellis Foundation	Ms. Nancy Garton	Ellen Guzauski	Susan House	Colleen Kennedy	Allan R. & Jeanne Larson	Mr. & Mrs. Paul J. Malchiodi	Dennis Monroe
Dr. & Mrs. Richard Ellis	Dr. & Mrs. David K. Gaskill	Mr. John C. Habel	Ms. Caroline Houser	Mr. & Mrs. Thomas W. Keesee III	The Robert J. Laskowski Foundation	Shiyoe S. Malinasky	Mr. & Mrs. Craig Monson
Lillian Emmons	Mr. Richard S. Gasparotti	Mr. & Mrs. Paul H. Haberman	Andrea Huber	Ms. Kathryn Kemper	Kevin Latek	Mr. Ron Mallory	Douglas Montgomery & Matthew Hudson
Patricia Eng	Craig Gaw	Susie Haleblan	Ms. Barbara Hughes	Mr. & Mrs. Gregg Kerber	Catherine & Collin Lau	Stephen Maloney	William & Margot S. Moomaw



Ms. Carol Moore	Jonathan Packer & Eunsung Cho
Michael Moretti	Hosahalli Padmesh
Ms. Beverly Morgan	Eliot W. Paine
John & Tashia Morgridge	Kornelija Palle
Mary Mormann	Hemal Parekh
Mrs. Janis W. Morris	Mr. Brainard W. Parker III
Ms. Linda S. Morris	Homi Patel
Jeff & Shay Morris	Richard Paull
Richard Morrison	Mr. Richard Pavel
Mr. & Mrs. Duane Morse	Ms. Carol L. Penner
Harriet C. Moss & Paul A. Rosenberg	Jeffrey Pepper
The MSA Family Fund	Mr. Gregg Perkin
Dr. Michael Mundt	The Perkins Charitable Foundation
Mr. Phil Munsey	The Todd & Lydia Peter Charitable Fund
Barbara Murray	Dr. Michael W. Peters Ph.D.
Melissa M. Muth	Dr. & Mrs. Nathaniel Peters
Suhashini Muthukrishnan	Celesta Peterson
Ms. Jeanne C. Myers	Mrs. Bette Petrides
Lynn E. Myers	Mrs. Gail Peyton
Ms. Janet L. Nace	Tod & Elizabeth Peyton
Terry Naidoo	Ms. Ann A. Philips
Erica Naito-Campbell	Mr. Joseph Phillips
Julia Nasser	Mrs. Valerie O. Phillips
Hadley Nasshorn	Diego Piacentini
Mr. & Mrs. James S. Neish	Mr. Raymond D. Picciano
Adrianna Ness	Ms. Ellen Pickler Harris & Mr. Ron Harris
Network For Good	Mrs. Judith M. Pieper
Ntokozo Ngcobo	Louis B. Pieper Jr.
Ms. Linda L. Nicholes & Dr. Howard E. Stein	Coleene Piotrowski
Dr. Valerie Nicholson	Genevieve Poirer-Richards
Donald Niemann	Mr. James A. Poley
David North	Mr. & Mrs. Ira Polk
Mr. & Ms. David A. Northrop	Gerald & Patricia Pollack
Sandy Northrop & David Lamb	Susan Pollans & Alan Levy
Ms. Margaret Nulsen	Mr. David Porteous & Mrs. Vicky Smith
Dr. Donald & Mrs. Tessa Nuss	Mr. David B. Posner
Mark & Vickie Nysether	Jonathan Poster
Mr. Andreas Ohl & Mrs. Laurie O’Byrne	Rebecca Preston
Rene O’Connell	Martha Prine
Gail Odell	JoAnn Priore
Mr. Roby B. Odom & Mrs. Barbara Odom	Claire Proffitt
John & Dorothy Oehler	Mr. Randall Propp
Ms. Pamela A. Okano	Ms. Barbara Prynoski
Ms. Leslie O’Loughlin	John Pusey
Mr. Harry Olsen	Vivian Pyle & Anthony Anemone
Wynn O’Neill	Ms. Maya Rainey
Ms. Jean Oppenheimer	Raghunath & Aparna Ramakrishnan
Susan Ordway	Leanne Ramsey
Ms. Patricia Ormsbee	Mr. Robert Ramsey
Ms. Karen Outland	Ann Rankin
Ms. Diane C. Pace	Dr. Gordon R. Ray M.D.

Bayard Rea	Raven Sara
Alexandra Reed	Daniel Sawyer
Ian Reed	Michael Scavio
Mr. & Mrs. William S. Reed	Timothy & Anne Schaffner
Ms. Monique Regard	Mrs. Lorraine Schapiro
Kathy Reichs	Ms. Susan Schiffer & Mr. James Barsoum
William Reid & Margie Reid	In honor of Ron & Peg Schisler
Mr. Tom Reifsnyder & Mrs. Lily T. Im	Gloria G. Schlaepfer
Renaissance Charitable Foundation	C. Schmidt
Mr. Richard L. Revesz & Mrs. Vicki L. Been	Kathleen Schmidt
Sohn Reynolds	Nancy Schoeneman
Tina Rhea	Dr. John J. Schrogie
Joe & Liz Rhoades	Mr. Sidney Schultz
William & Megan Rhodehamel	Jennifer Schuppert
Mr. & Mrs. Peter Rice	Karin Schwab
David Richardson	Irene & Jeffrey Schwall
Mrs. Susanne Richey	Ms. Elizabeth Schwartz
Mr. Thomas H. Richey	Schweinsburg Charitable Fund
Taylor Ricketts	Jane Schweinsburg
Marie W. Ridder	Ian Scofield
Ms. Robin C. Ried & Mr. Christopher H. Staudt	Ms. Kaye W. Scoggin
Mr. Lawrence T. Ring	Ms. Roxanne Scott
Ms. Nancy A. Ritzenthaler & Mr. Albert L. Odmark	Sean Scully
Lucille G. Robertson	George Seger
Ms. Sharon Robinson	Ms. Barbara Selfridge
Ms. Andrea Rockefeller	Mr. Keith R. Sendall
The John A. Rodger Foundation	Don Sender
John Rodgers	Mrs. Cindy Senften-von Coelln
Ms. Joanne P. Rodriguez	Ms. Miriam Sexton
Ms. Laura R. Rogers	Ingeborg Shannon
Nicole Roldan Leben	Arnold Shapiro & Karen MacKain
Howard Rosen	Shell Oil Company Foundation Matching Gifts
Ms. Sandra C. Rosencrans	Lilian Shen
Barbara Rosensimon	Scott Sherman
Rouse Family Foundation	Sheryl Steinberg Collins Foundation
Ms. Megan J. Rowe & Mr. David J. Blank	Christopher & Claire Shoales
Ms. Melanie J. Rowland & Mr. Randy Brook	Sharon Shrock
Mark & Beth Ruben	Mr. Richard J. & Mrs. Jill T. Sideman
Roberta Rubenstein	Greg Singleton
Ms. Elizabeth Ruml	Sir Edmond B.V.
Mr. & Mrs. Charles C. Rumsey Jr.	Ken & Jacqueline Sirlin
Laura & Joseph Rushton	Ms. Sharon Skinner
John & Carol Rutherford	Mr. Steve Smart & Mr. Javier Barreto
M Duane D. Rutledge	Mr. & Mrs. Jonathan P. Smith
Ms. Patricia M. Ryan	Mr. Justin P. Smith
Nicole Saadvandi	Lesley Smith
Vignesh Sadras	Dr. Mark S. Smith & Dr. Maxine R. Harris
Dustin Saiidi	Richard Smith
Rajinder Saini	Robin Smith
Ms. Sibyl Sanford	W. Kelly Smith

Edward Smock	Bob C. Taylor
Mrs. Esther A. Snowden	Mr. Bradford Taylor
Katherine Snowden	Charleen Taylor
Mrs. & Mr. Elizabeth Snyder	Mr. Jeff Taylor & Mrs. Sherl Taylor
Ms. Janet Snyder	Mrs. Lois R. Taylor
Mr. Ronald E. Snyder	Dennis Telzrow
Mr. & Mrs. Jeffrey M. Spatz	Kimberly Teraberry
Caroline Spencer	David & Eudora Tharp
Ms. Nancy Spool	Mr. Brian Theyel
Dr. Robert Stagman	Ms. Laura Tiktinsky
Dr. Mark T. Stanback & Ms. Nancy Popkin	Mr. & Mrs. Jim Tolonen
Michael Steigerwald	Paul F. Torrence
Ms. Karen Steingraber	Ms. Jennifer Tost
Charles L. Stellberger	Mr. Christopher D. Tower & Mr. Robert E. Celio
Herbert L. Stern	Mr. & Mrs. Gordon T. Tracz
Kathy J. Steve	Janet Trettner & Eugene Stoltzfus
Ms. Sally Stevens	Clark Trexel
Mr. Chris Stewart	Dr. Frederick R. Treyz Ph.D.
Ms. Barbara Stiefel	Ms. Ariana M. Tuggle & Mr. Erik A. Kruger
Jack & Shelby Stifle	Dr. & Mrs. Scott W. Tyler
Ms. Faith Stone	Marc Ullman
Charles L. & Carolyn J. Stratton Fund	Dennis & Sue Umshler
Emma Streano	United Way of King County
Joanna Sturm	Mr. Richard D. Urell
Ravi Subramanian	US Bank Foundation
Anu & Ish Sud	Ms. Sharon J. Vacar & Mr. Thomas N. Vacar
Mr. & Mrs. Barry R. Sullivan	Ms. Abigail P. Van Alstyne
Mr. & Mrs. John M. Sullivan Jr.	Ms. Helena Van Dierendonck
Mr. Timothy P. Sullivan & Mrs. Wendy M. Sullivan	Van Itallie Foundation Inc.
Carl Sulser	Suparna Vashisht & Manish Goel
Summit & Peak Charitable Fund	Ana Vegega
Ms. Rebecca Sunshine	Ms. Joan C. Vellutini
Dr. & Mrs. Mathew P. Swerdlow	Mr. Alan R. Viani
Robin Swope	Bonnie L. Vick
Topo Swope	Mr. & Mrs. Mark D. Vigren
Dr. Jim Syverud & Barbara Syverud	Ms. Nancy Vlassis
Sylvia V. Taborelli	Ashok & Rama Vora
Richard Tasker	Ann Wacker
Ms. Beverly L. Taylor	Sally K. Wade

Estate Giving

Walter & Beatrice Balaban	Marilyn Caldwell
Theresa L. Bannister	Cleopatra Campbell
Andrew & Audrey Belomyzy (Charitable Trust)	J. Morse Cavender
Ann S. Bergman	Margaret K. Clark
Chandler W. Berliner	Susan Creveling
Jane Brown	Diane Currie
Helen J. Brown	Anne Cusic
Phyllis Anne Browne	Virginia M. DeLoney

Wags & Menace Make a Difference Foundation	The William H. & Mattie Wattis Harris Foundation
Mr. Jack Walker	Mr. & Mrs. Craig Williams
Jan Walker	Mr. Jay Williams Jr.
Ms. Laurelia Walker	Mr. Lloyd Williams
Marcia Walker	Alexandra Wilson-Seelig
Mr. Paul Walker	Ms. Lisa Wunningham
Mrs. Barbara Wallach	Nancy Corwith Hamill Winter
Mr. William D. Wallenbecker Jr.	Ms. Beth Winters
Dr. John W. Walsh M.D.	Jayne Wise
Martha M. Walsh & Peter B. Bloland	Stuart C. Witham
Ms. Josephine Wardle	Ms. Sally Wittier
Judith & James Warner – Boulder, Colorado	Gwen Woirhay
John W. Warner, IV Foundation, Inc.	Ms. Diana Wolcott
Mrs. Patricia Warner	Kristen M. & John L. Wolfe
Arthur Waskey	Shu J. Wong
Terence M. & Donna Watson	Judith M. Wood
Kym Watt M.D.	Ms. Margaret Wood
Brittany Weeden	Janet Woodward
Diana Wege	Mr. David L. Worrell & Mrs. Julianne Worrell
Mr. & Mrs. Theodore C. Weill	Alan & Penny J. Wortman
Diann Weinman	Emory Wright
Laura Weiss	Mr. & Mrs. Paul Wright
Penny & Carl Weissgerber	Mr. Philip Wright & Mrs. Penelope Wright
Joan & Charles Weissman	Ms. Molly Wu & Mr. Mark Molloy
Mr. Warren E. Weissman	John Yaist
Sara Wells	Elizabeth Yerkes
Daniel Whalen & Sharon McQueen	Mrs. Emily Yoffe & Mr. John Mintz
Katharine Whild	Mr. Gordon Young
Mr. Patrick E. White	Ms. Kaivalya Young
Ms. Pamela A. Whitehouse	Robert Young
Christopher Whitney	Faye & Lee Younker
Mr. & Mrs. Brian Whittman	Mr. Mark P. Zaitlin
Adrian Whorton	Gloria Zavala
Stephen Whyte & Rebecca Ralston	Ms. Anne-Marie Ziegler
Ms. Anne H. Widmark	Dr. & Mrs. Daniel W. Ziegler
Kenneth J. Wiesen	Scottie Zimmerman
Keith & Janice Wiggers	Steven Zimmerman
Kenneth Wildrick	
Carl Wilkinson	

Janet & Jack Demmler	Kathleen A. Haberkern
Nancy Dix (The Nancy Dix Trust)	Linda S. Handelman
John Albert Evans, II	Pat Healy (Pat Healy Fund)
Elizabeth E. Finkler	David Helt
Richard M. Fishbeck	Michael J. Hurtack & Beverly A. Hurtack
Lynda Fox	Caroline Kane
Elaine J Goehringer	Sylvia Karalius
Sandra Jean Grijalva	Ann P. Keenan



Catherine Latham (DAF)	James D. Mathews	Marianna Sielicki	Alan S. Trueblood
Dawn B. Lewis	Scarlet Mazzucco	Joyce Frank Smith & Gene Davidson Smith	Irwin Jr & Marilyn Uteritz
Mildred A. Lillis	Susan McKenzie	Jo-Ann Smith	Marion Taylor Ward
George Loukides	Kay Eleanor Pritchett	Edward Nicholas Snyder	Helen M. White
Walter J. Lynwood	Richard Rogalski	Vivian C. Sontag	Constance White
Catherine M. Mace	Leigh Rosenberg	Marjorie A. Spence	Alec Wilder
Anne Margaret Mahony	Gladys Rudolph	Betty F. Talbert	Betty B. Young
Margaret Martinez	Emanuel Schweid	Barbara M. Trelenberg	

Kilimanjaro Society

Individuals who have included a future deferred gift to AWF through their legacy plans.

Anonymous (526)	William & Ann Buckmaster	Kirsty Forgie	Mrs. Mae B. Haynes
Paula L. Adams	Dr. Cynthia R. Burns	Jane G. Fouser	June E. Heilman
Carla Alford	Mark Burstein & David Calle	Ms. Jo A. Frances	Kristine Heine
Gwen M. Allen	Jane S. Burtnett	Ruth E. Francis	Ronald Helmeci
Helen F. Anderson	Wallace M. Cackowski	Harriette M. Frank	Gail & Leonard Hendricks
Marie J. Andreini	Irene Cannon-Geary	Ms. Constance C. Frazier	Ms. Loretta J. Herger
Linda Andrews	Laura Carbone & Mitchell Watsky	Paul & Florine Frisch	Linda J. Hill
Marjorie A. Ariano	Lee Carr	Desly & Christopher Fryer	Mary Lou Hill
Susan Arias	Bonny & Ian Chick	Mr. Paul Gagliano	Dr. Sanford & Ann Hochman
Jan Armstrong	David Cholak & Debbie Decampus	Rick & Joyce Gallagher	Margaret Hodges
Carol Arnold & Andrew J. Moore	Christina Clayton & Stanley Kolber	Barbara Gallardo	Jeffrey M. Holstein, RN, C
Cynthia A. Arnold & Peter O. Stahl	Mr. & Mrs. Payson Coleman	Adele Garvin	Mark & Barbara Holtzman
Kathy Arnold	Patricia Collier	Jane W. Gaston	John K. & Janice L. Howie
Larry & Kathryn Augustyniak	Joyce Dean Cology	William & Cheryl Geffon	Susi Huelsmeyer-Sinay
Gloria J. Austin	Sally Cumine	Jeanie Gibbs	Connie M. Huggett
Barbara Babcock	Jan Cunningham	Gordon S. Gibson	Roger W. Hutchings
Joy Baker	Louis Brendan Curran	Susan Gilbert	Judy & Cal Jaeger
Marcia Balbus	Ms. Susan M. Curry	Dr. Linda L. Giles	Janet & William “Wilber” James
John & Valerie Bance	Gail B. Dallmann & Duane A. Swenson	Ms. Susan Glasbrenner	Buff Jebsen-Ross
Linda M. Barker	Dianne C. Dana	Richard P. Glasser	Allen L. Jefferis
Stephanie Barko	Toni M. Davison	Joyce A. Godwin	Carol E. Jones & David Johns
Robert G. & Ann S. Barrett	Nancy Davlantes	Carol A. Goff	Kathryn Johnson & Scott Berry
Mr. & Mrs. Richmond S. Bates	Ms. Paula Dax	Margaret & Aurel Goglin	Hon. Kristina M. Johnson, Ph.D.
Gary Baxel	Joyce Dobkins	Susan M. Gonzalez	Vicki Johnson
C. Becktel	Katie H. Doyle & Richard Cunningham	Stephen P. Govan	Carol Johnston
Patrick J. Bergin, Ph.D.	Joyce Eckman	Green Family Trust	Deena & Steven Jones
Mr. Robin Berkeley, OBE	Mr. Jeffrey A. Eiffler	Beth Brock & Bob Greenawalt	M.S. Jones
Candace Bertelson	Dr. B. B. Eshbaugh	Beverly Fay Greenwold, M.D.	Tracy Lee Jones
Lela Bishop	Ms. Heather A. Evans	Kari Grengs	Bonnie Jupiter
Debbie & Michael Bloom	Peter Evans & Liz Dow	Tim & Devon Guard	Sharon Kantanen
Frances & Richard Bohn Trust	Val Ewton	Heather Sturt Haaga & Paul G. Haaga, Jr.	Karen M. Kaplan
Surya Bolom	Gloria J. Fenner	Robert & Martha Hall	Steven & Migette Kaup
Sherri Breyer	Mitchell Field	Michael & JoAnn Hamm	P. Ann Kaupp
James R. & Suzanne Meintzer Brock	Sharon Edel Finzer	The Hansons	Pauline E. Kayes
Elizabeth Dabney Brown	Lisa S. Firestone	Susan M. Harding	Mr. Dennis J. Keller
David & Joanne L. Brunetti	Charles P. Sweet & Ronnie S. Fischer	Romayne Adams Hardy	Constance A. Kelsey
Michael K. & Waltraud Buckland	June L. Fletcher	John & Melanie Harkness	Dr. Jeremy Kemp-Symonds
Deborah G. Buckler	Barbara L. Flowers	Barb Hauser	Hugh & Wendy Kendrick

Robert Kerr & Joan L. Kerr	Nancy Moffett	Richard & Jamie Roussel	Dennis & Sue Umshler
Robert E. King	Dorothy Moore	Jacqueline S. Russell	Stephen Urbrock
Susan Diane Kirchoff	Barbara Moritsch & Tom Nichols	Lynne G. Russert	Rita Vallet
Hedy Kolozsvary	Jeff & Shay Morris	Margaret Rust, Ph.D.	Shelley Varga
Madelon Kominic	Allen S. Moss	Mr. Hassan A. Sachedina	Ms. Barbara von Hoffmann
Jennifer A. K. Kraus	Harriet Moss & Paul Rosenberg	C.A. Sanders	Sharron Voorhees
Ken Kreinheder	Ms. Phyllis F. Mount	Anne & Joel S. Schecter	Codette G. Wallace
Marcy & Jeffrey Krinsk	Beth Mowry	Betsy Schiff	Kathleen Yvonne Wallace
Linda E. La Roche	Linda M. Moyer	Gloria Schlaepfer	Robert & Jean Walraven
Mary Ann Rao Lancaster	Kelly A. Moylan	Denise Schlener	Mr. & Mrs. Christopher C. Warren
Andrea R. Lapsley	Sherry H. Mullett	Jan & Mel Schockner	Roxanne Warren
Bonnie Larson-Brogdon	Ms. Mary B. Napoli	Irene & Jeffrey Schwall	Laura A. & Wayne J. Wathen
Brad Latimer	Lester H. Nathan	Melynnique & Edward Seabrook	Valerie Watt
Nancy Latner	Victoria K. & Victoria M. Neill	Sandra Pitts Seidenfeld	Karen Weber
The Gideon Animal Foundation	Vicki & James Nordskog	Miriam Sexton	Matthew T. Weir
Cheryl Lechtanski	Anne & John Norris	Margareta Shakerdge Cottington	Milt Weisman
Drs. Hans & Judith Remy Leder	John & Dorothy Oehler	Susan H. Shane	Terri Weist
Laura Lee	Sue Orloff	Anahit Shaterian	Mrs. Phyllis J. Whitney-Tabor
Patricia C. Lee	Dr. & Mrs. Samuel M. Peacock, Jr.	Jane & Marshall Sheldon	Keith & Janice Wiggers
Ms. Zheindl Lehner	David Peckman & Michael Baffa	Yvonne T. Sherman	Dr. & Mrs. Kenneth Wildrick
Deborah B. Leiderman	Jon & Analee Perica	Gloria A. Shidler	Dorothy Courtnage Wilson
Cheryl & Kevin Leslie	Ms. Barbara R. Perry	Frederick & Mary Lou Shirley	Anna E. Winand
Chalsa M. Loo, PH.D.	Cynthia M. Perry & Richard E. Sayers, Jr.	Mr. & Mrs. Christopher L. Shoales	Mrs. Margaret Winston
Mr. Alfred J. Lopena	Ms. Dawn Peterson	Lisa Stevens & Craig Sholley	Barbara Womack
Kirk P. Lovenbury	Jennifer Plombon	Mari Sinton-Martinez & Paul Martinez	Marge Wright
Dwight & Kimberly Lowell	Jeffrey & Yvonne Pommerville	Ken & Jacqueline Sirlin	R. Michael Wright
Malcolm & Trish Lund	Jonathan Porter & Paige Best	Bruce L. Smith	Susan E. Yager & Robert S. Berkowitz
Tara Lea Luther	Myrna Barbara Pototsky	Ms. Deborah A. Smith	Steven Zeluck
Susanne Madden & Dr. Thomas Webb	Paul & Karen Povey	Drs. Harlan & Elizabeth Smith	
Sandra Malmstrom	Kathy D. Preziosi	Jeff Smith	
Ms. Georgia J. Malone	Claire B.M. Proffitt	Mr. Ed Snape	
Lauren H. Marmor	Linda Prusik	Rita A. Stapulonis	
Keith Martin	Patrick J. Raftery	Michael Steamer	
David Mason	Sandra A. Rakestraw	Kenneth D. Stephens	
Teri K. Mauler	Viswanath Rao & Katheryn Small	Lisa Stevens & Craig Sholley	
Margaret S. Maurin	Julie M. Reilly	Nancy M. Stevens	
Christine “Kris” McCann	Ms. Anna K. Rentz	Peter & Carol Stewart	
Ruth McCloud	William F. & Jane Reynolds	Sarah B. Stewart	
Ms. Nancy A. McDaniel	Howard D. Richards	Mrs. & Mr. Shelby J. Stifle	
Scott T. McGraw	Nancy R. Richards Esq.	Leila Maw Straus	
Anne McInerney	Crystal A. Ricker	Ingrid M. Sunzenauer & Ralph C. Wright	
Mr. & Mrs. Henry P. McIntosh, IV	Dr. Ida K. Rigby	Evelyn F. Sweigart	
David C. McKechnie	Jennifer Ritman & Andrew Brinkworth	Duchess A. Swift	
Sally McMahon	Nina Tanner Robbins	Sylvia V. Taborelli	
Kristine Meek	Laurie Robinson & Sheldon Krantz	Bob Taylor	
Mrs. Wanita M. Meenan	Murray S. Robinson	Patricia M. Taylor	
Tony Melchior	Tia Nolan Roddy	Mr. Walter Tingle & Mrs. Thea Holmes	
Dr. R. Matilde Mésavage	Lorraine Rose	Mark & Annabelle Travis	
Mickles Elephant Foundation	Ms. Leigh Rosenberg	Jackie Turner	
Robert J. Miller	Stuart Rosenburg, DVM	Ruth Elliot Turner	
Queenelle Minet	Sandra Clungeon Rosencrans	John H. Tyler	



# FINANCIALS

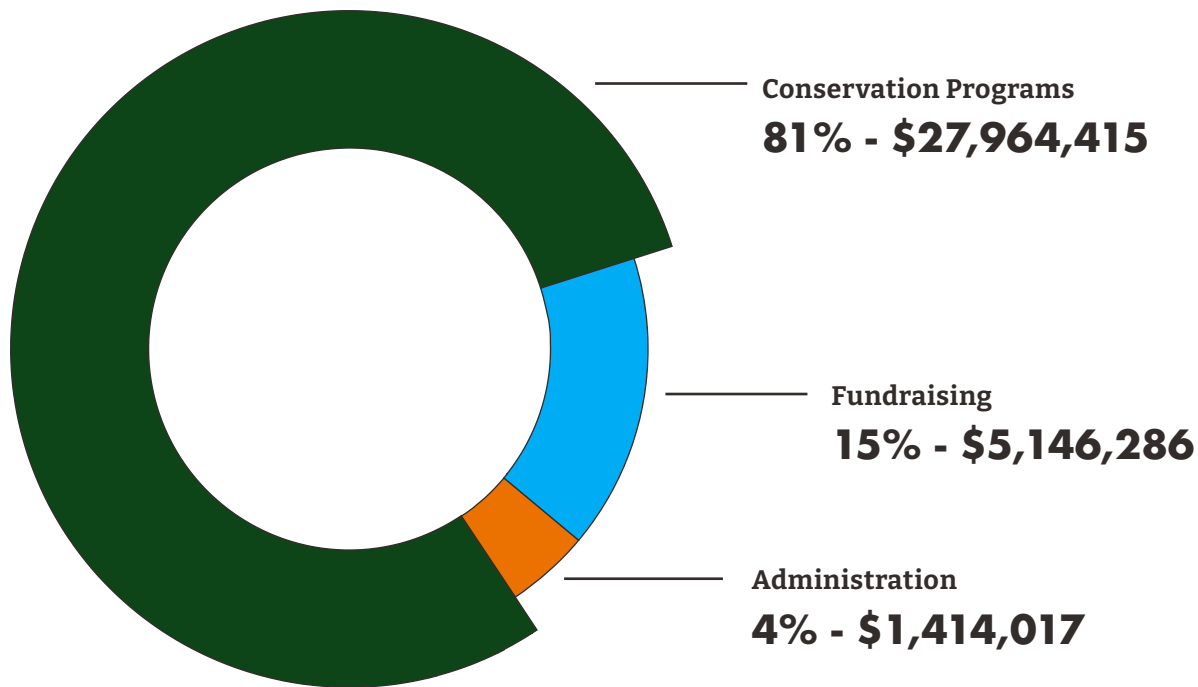


KENYA: NAIROBI NATIONAL PARK. © JOSE FRAGOZO, BENJAMIN  
MKAPA AFRICAN WILDLIFE PHOTOGRAPHY AWARDS, 2021

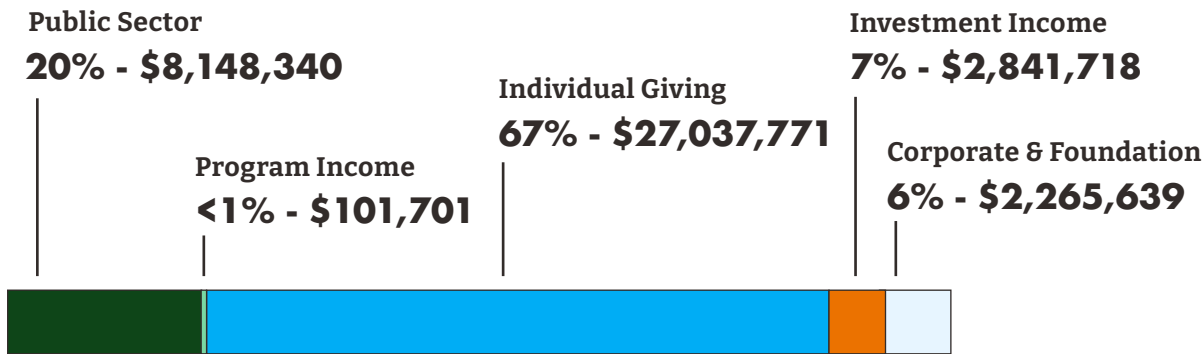


Since AWF’s beginnings over 60 years ago, we’ve been a responsible steward of your contributions in service to Africa’s wildlife and wild lands.

## Organizational Efficiency



## Revenue Breakout



## Summary of Activities as of June 30, 2024

OPERATING REVENUE	UNRESTRICTED	RESTRICTED	TOTAL
Gifts from Individuals	\$13,967,434	\$13,070,337	\$27,037,771
Corporate & Foundation Support	\$609,855	\$1,329,418	\$1,939,273
Public Sector Grants	\$8,148,340	-	\$8,148,340
Events & Other Income	\$101,701	-	\$101,701
In-kind Contributions	\$326,366	-	\$326,366
Restricted Net Assets Utilized	\$5,317,644	(\$5,317,644)	-
Total Operating Revenue	\$28,471,340	\$9,082,111	\$37,553,451
OPERATING EXPENSES			
Conservation Programs	\$25,089,222	-	\$25,089,222
Education & Outreach	\$2,875,193	-	\$2,875,193
Total Program Expenses	\$27,964,415	-	\$27,964,415
Finance & Administration	\$1,414,017	-	\$1,414,017
Fundraising	\$5,146,286	-	\$5,146,286
Total Supporting Services	\$6,560,303	-	\$6,560,303
Total Operating Expenses	\$34,524,718	-	\$34,524,718
CHANGE IN NET ASSETS	\$3,760,084	\$9,630,535	\$5,870,451

## Summary of Financial Position as of June 30, 2024

	FY2024	FY2023
Cash & Equivalents	\$3,956,733	\$3,647,480
Investments	\$23,872,387	\$23,350,982
Gifts & Grants Receivable	\$16,566,798	\$7,071,325
Accounts Receivable	\$313,820	\$397,910
Prepaid & Other Assets	\$1,565,714	\$1,508,962
Loans Receivable	\$223,395	\$360,640
Property & Equipment, Net of Depreciation	\$5,023,470	\$5,129,990
Right of Use Asset	\$2,816,038	\$3,330,935
Total Assets	\$54,338,355	\$44,798,224
Impact Notes Payable	-	-
Accounts Payable & Accrued Expenses	\$2,180,644	\$1,846,519
Refundable Grant Advances	\$6,296,046	\$2,242,278
Loan Payable	-	-
Lease Liability	\$3,848,433	\$4,552,501
Other Liabilities	\$134,552	\$148,697
Total Liabilities	\$12,459,675	\$8,789,995
Unrestricted Net Assets	\$19,292,147	\$23,052,231
Restricted Net Assets	\$22,583,533	\$12,955,998
Total Net Assets	\$41,875,680	\$36,008,229
TOTAL LIABILITIES & NET ASSETS	\$54,335,355	\$44,798,224



Africa

KENYA

**HEADQUARTERS**  
AWF Conservation Centre  
Ngong Road, Karen  
P.O. Box 310, 00502  
Nairobi, Kenya  
+254 711063000

CAMEROON

Rue No. 1792  
Bastos-Yaoundé, Cameroon  
Between the Canadian High  
Commission and the  
Belgian Embassy  
+237 699035962

DEMOCRATIC REPUBLIC  
OF THE CONGO

Simbi Mpongo Avenue, n.02  
Quartier Basoko  
Commune de Ngaliema  
Kinshasa, DRC  
+243 812 632 020

ETHIOPIA

Simien Mountains  
Landscape Project Office  
P.O. Box 1  
Debark, Ethiopia

RWANDA

Kigali Heights Building  
2nd Floor  
KG 7 Ave Kigali, Rwanda  
+250 788309960

TANZANIA

Plot No. 79, Corridor Area  
P.O. Box 2658  
Arusha, Tanzania  
+255 738 251 337

UGANDA

Plot 28 Acacia Avenue  
P.O. Box 37346  
Kololo, Uganda  
+256 393266652  
+256 393266653/4

ZIMBABWE

Unit D, Delken Complex  
Mount Pleasant Business Park  
Harare, Zimbabwe  
+263 783390417

Europe

BELGIUM

Berkeley Suite  
Boulevard Louis Schmidt 64  
1040 Brussels, Belgium  
+49 172 5190 374

SWITZERLAND

C/o IUCN  
28 rue Mauverney  
1196 Glad, Switzerland  
+41 229990146

UNITED KINGDOM

Berkeley Suite  
35 Berkeley Square, Mayfair  
London W1J 5BF, United Kingdom  
+44 020 7692 4012

North America

CANADA

18 King Street East, Suite 1400  
Toronto, Ontario M5C 1C4, Canada  
+1 647 559 1818

UNITED STATES

1100 New Jersey Avenue SE, Suite 900  
Washington, DC 20003, United States  
+1 202 939 3333

AWF Leadership

EXECUTIVE TEAM

**Kaddu Sebunya**  
*Chief Executive Officer*

**Andrea Athanas**  
*Vice President, Enterprise  
& Investment*

**Eric Coppenger**  
*Chief of Staff*

**Charly Facheux**  
*Senior Vice President, Conservation  
Strategy, Impact & Learning*

**Beth Foster**  
*Senior Vice President, Brand  
& Public Engagement*

**Richard Holly**  
*Chief Financial Officer*

**Frederick Kwame Kumah**  
*Vice President, Global Leadership*

**Philip Muruthi**  
*Vice President, Conservation  
Science & Planning*

DEVELOPMENT TEAM

**Nicole Engdahl**  
*Vice President, Individual Giving*

**Audrey Im**  
*Senior Advisor, Principal Giving*

**Amy Gossow**  
*Vice President, Corporate  
& Foundation Relations*

©2025 AFRICAN WILDLIFE FOUNDATION

THE AFRICAN WILDLIFE FOUNDATION IS HEADQUARTERED IN NAIROBI, KENYA, A REGISTERED 501(C)3 ORGANIZATION IN THE UNITED STATES AND A REGISTERED CHARITY IN THE UNITED KINGDOM AND CANADA. WITHIN THE LIMITS OF LAW, YOUR GIFT IS TAX-DEDUCTIBLE TO THE FULLEST EXTENT POSSIBLE. FOR TAX PURPOSES, OUR EIN IS 52-0781390.

OUR SINCEREST THANKS TO THE PHOTOGRAPHERS WHO HAVE DONATED THEIR IMAGES FOR USE IN THIS REPORT.